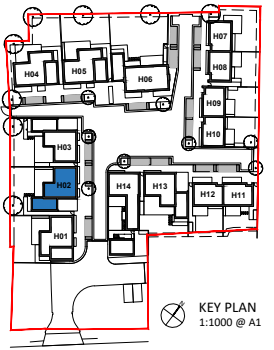


H02



- KEY**
1. brickwork - white painted
 2. brickwork - red/brown
 3. timber panel - natural finish
 4. timber - painted black
 5. roof slate - grey
 6. metal roof sheet - grey
 7. flush casement window - grey
 8. sliding door - grey
 9. metal balustrade - grey
 10. photovoltaic panel
 11. rooflight



REAR (SW) ELEVATION



LH SIDE (SE) ELEVATION



FRONT (NE) ELEVATION



RH SIDE (NW) ELEVATION

NOTES

CONSULTANTS
 - Refer to highways consultant's drawings for details
 - Refer to landscape consultant's drawings for details
 - Landscaping layout is indicative only

AREAS
 - Refer to area schedule

Rev	Notes	dd.mm.yy	By	Auth



KING & CO
 PROPERTY DEVELOPMENT & INVESTMENT
 EST. 1920
 Marquis House, 68 Great North Road, Hatfield, AL9 5ER
 www.kingandcompany.co.uk

Date: Nov 2020
 Drawn by: TA
 Checked by: JC
 Scale @A1: 1:50
 Scale @A3: 1:100
 CAD File No:

WELLS FARM
 Northaw Road East, Cuffley
 PROPOSED H02
 ELEVATIONS
PLANNING
 1718 P1-022

Revision