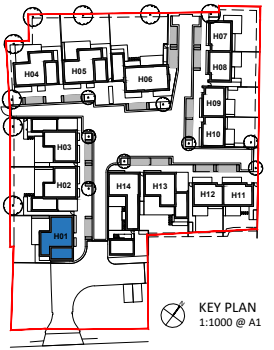
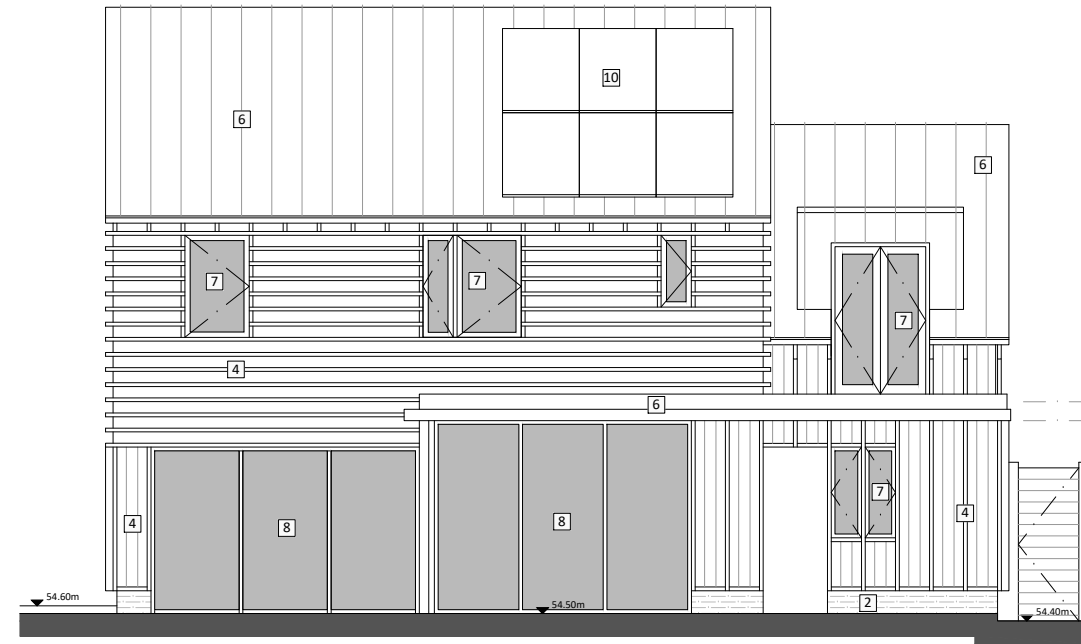


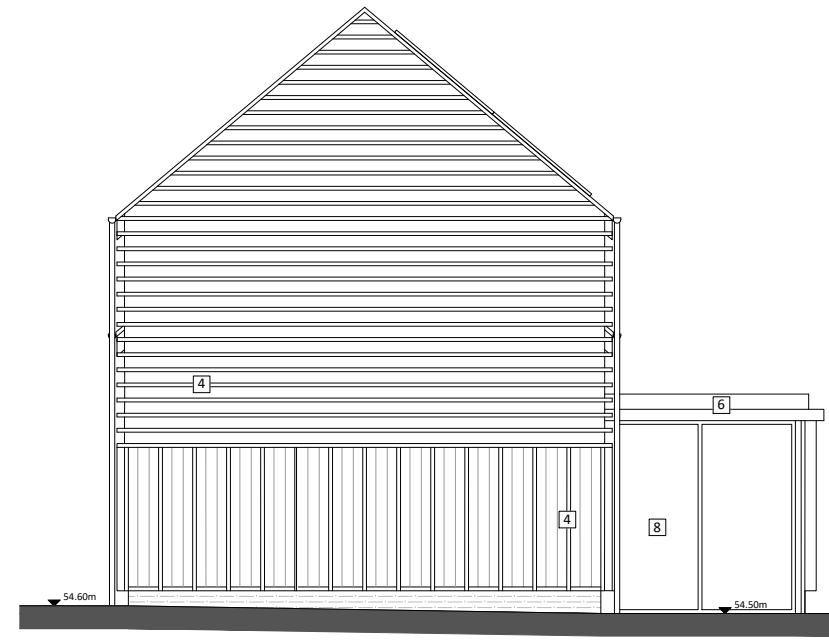
# H01



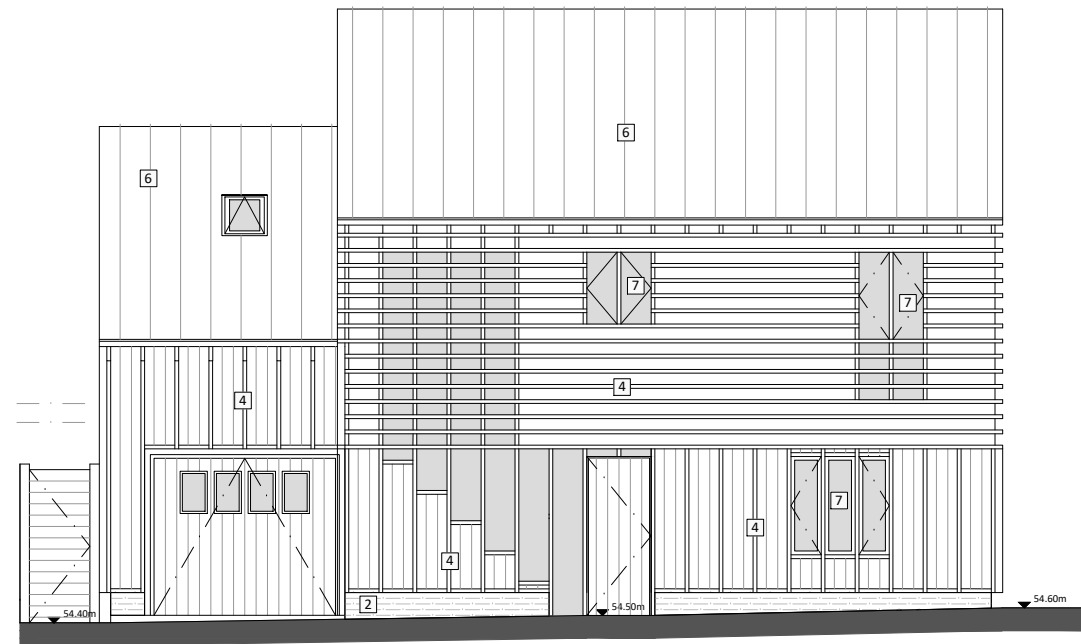
- KEY**
1. brickwork - white painted
  2. brickwork - red/brown
  3. timber panel - natural finish
  4. timber - painted black
  5. roof slate - grey
  6. metal roof sheet - grey
  7. flush casement window - grey
  8. sliding door - grey
  9. metal balustrade - grey
  10. photovoltaic panel
  11. rooflight



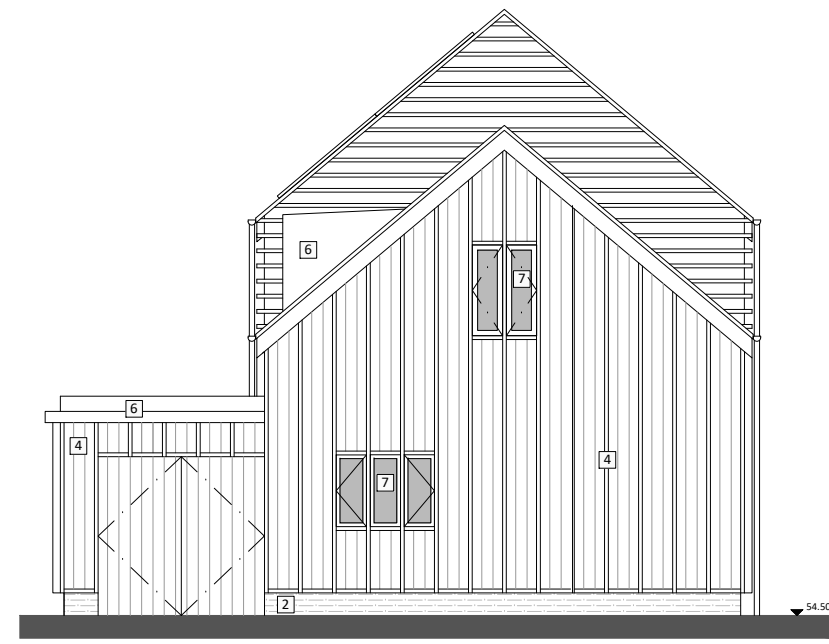
REAR (SW) ELEVATION



RH SIDE (NW) ELEVATION



FRONT (NE) ELEVATION



LH SIDE (SE) ELEVATION

**NOTES**  
 CONSULTANTS  
 - Refer to highways consultant's drawings for details  
 - Refer to landscape consultant's drawings for details  
 - Landscaping layout is indicative only  
 AREAS  
 - Refer to area schedule

Rev	Notes	dd.mm.yy	By	Auth
/		dd.mm.yy	By	Auth



**KING & CO**  
 PROPERTY DEVELOPMENT & INVESTMENT  
 EST. 1920  
 Marquis House, 68 Great North Road, Hatfield, AL9 5ER  
 www.kingandcompany.co.uk

Date: Nov 2020  
 Drawn by: TA  
 Checked by: JC  
 Scale @A1: 1:50  
 Scale @A3: 1:100  
 CAD File No:

WELLS FARM  
 Northaw Road East, Cuffley  
 PROPOSED H01  
 ELEVATIONS  
**PLANNING**  
 1718 .. .. P1-012

Revision