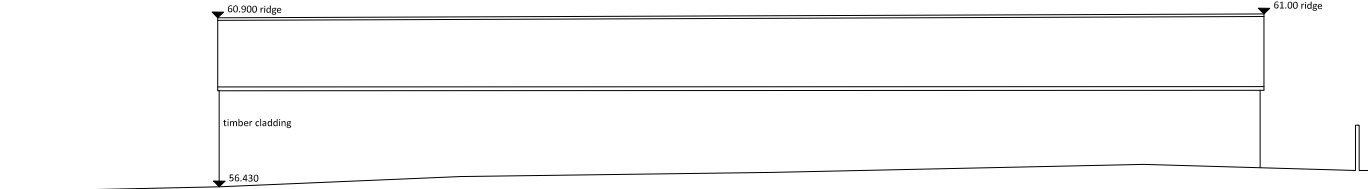
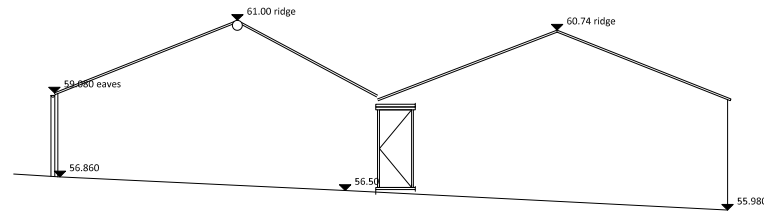


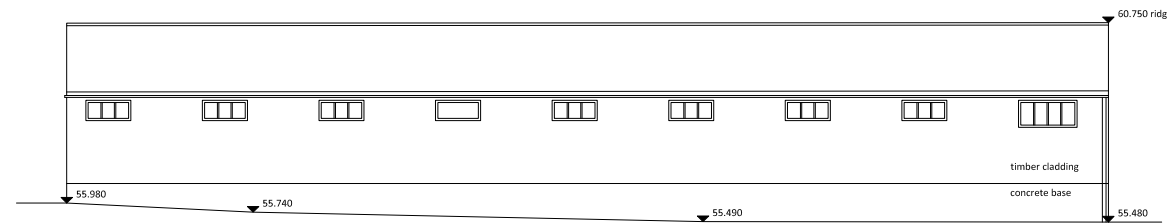
Unit C and E
South East Elevation



Unit C
North East Elevation

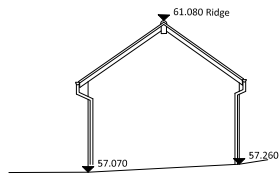


Unit C and E
North West Elevation

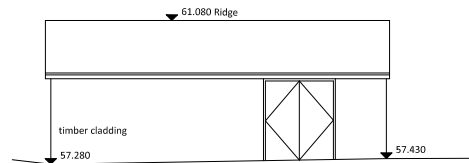


Unit E
South West Elevation

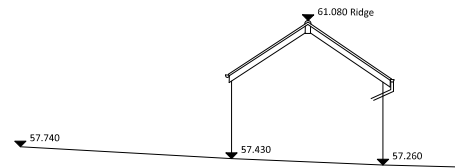
EXISTING ELEVATIONS UNITS C AND E



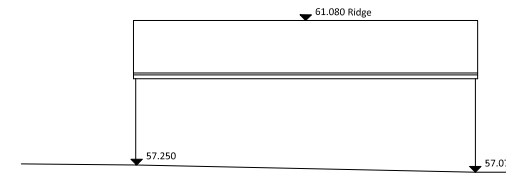
Unit G
South East Elevation



Unit G
North East Elevation

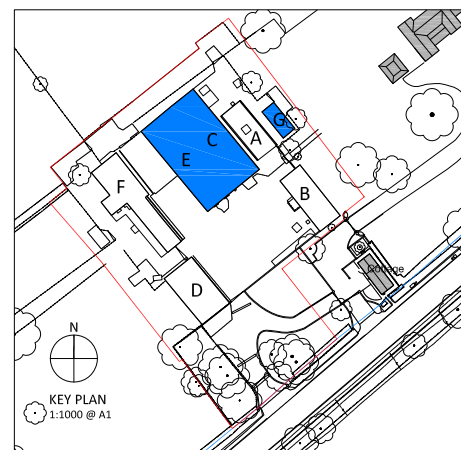


Unit G
North West Elevation

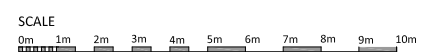


Unit G
South West Elevation

EXISTING ELEVATIONS UNIT G



Rev	Notes	dd mm yy	By	Auth
1	Issue for consultation	15/11/20	TA	JC
2	Issue for approval	15/11/20	TA	JC
3	Issue for construction	15/11/20	TA	JC
4	Issue for completion	15/11/20	TA	JC
5	Issue for handover	15/11/20	TA	JC
6	Issue for final	15/11/20	TA	JC
7	Issue for final	15/11/20	TA	JC
8	Issue for final	15/11/20	TA	JC
9	Issue for final	15/11/20	TA	JC
10	Issue for final	15/11/20	TA	JC



KING & CO
PROPERTY DEVELOPMENT & INVESTMENT
EST. 1920
Marquis House, 68 Great North Road, Hatfield, AL9 5ER
www.kingandcompany.co.uk

Date: Nov 2020
Drawn by: TA
Checked by: JC
Scale @A1: 1:50
Scale @A3: 1:100
CAD File No:

WELLS FARM
Northaw Road East, Cuffley
EXISTING ELEVATIONS
UNITS C, E AND G

1718 P0-102

Revision
1