



Trees on site - position and spread taken from topographical survey by Skyline Surveys

Existing woodland adjacent to site trees not measured

3-bedroom house

PLOT ONE
2,180 sq.m plot

4-bedroom house

Refer to plans by Scarp Landscape Architecture for details of landscape design proposed

PLOT TWO
3,395 sq.m plot

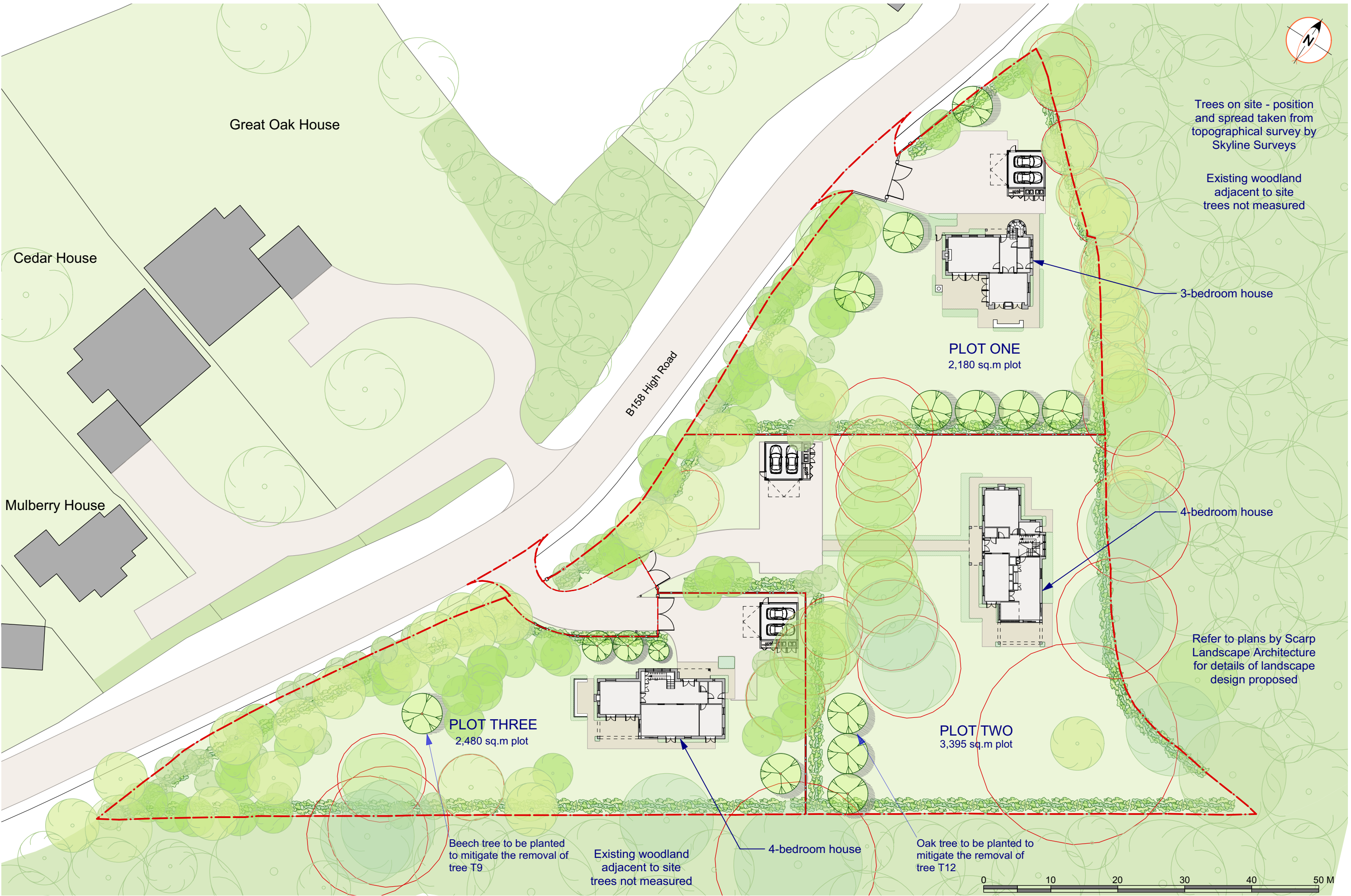
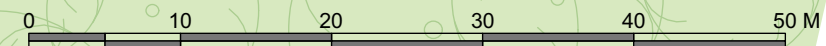
PLOT THREE
2,480 sq.m plot

Beech tree to be planted to mitigate the removal of tree T9

Existing woodland adjacent to site trees not measured

4-bedroom house

Oak tree to be planted to mitigate the removal of tree T12



Chassay Studio

108 Palace Gardens Terrace, London W8 4RT
T. 0207 243 1516 www.chassaystudio.com

© CHASSAY STUDIO Ltd 2018

Rev.	By	Description of Change	Date	Checked
v8	PP	Submitted with planning application	23.03.18	MQ

The Spinney
High Road, Essendon
AL9 6HP

Title
**SITE PLAN - PROPOSED
SHOWING ROOT PROTECTION
AREAS**

Job Code Drawing No. Revision
1610-A-31 v8
Date
23.03.2018

status : FOR
PLANNING
Scale
1:500 @ A3