

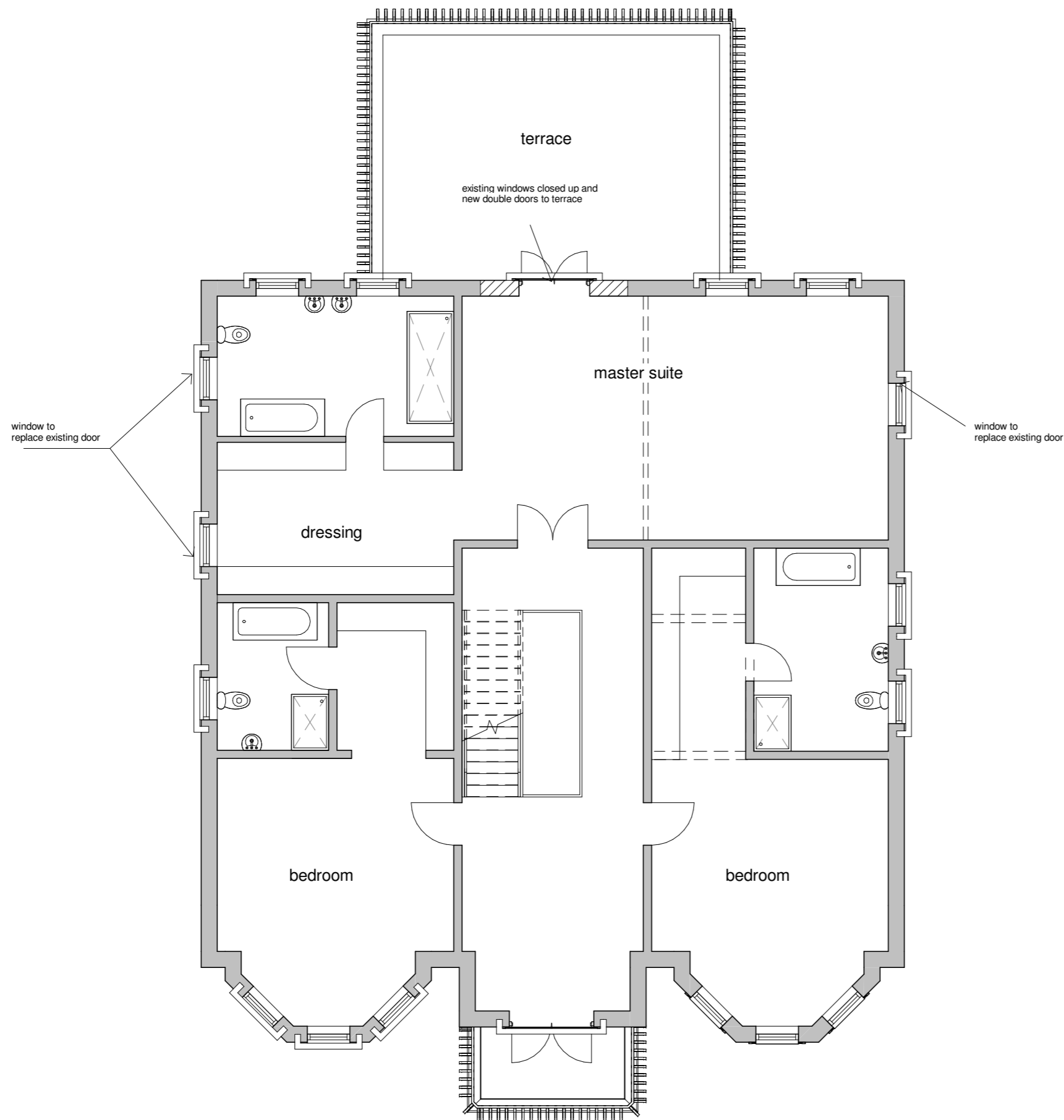


Chase new Homes  
16-18 Howard Business park  
Howard Close  
Waltham Abbey  
Essex  
EN9 1XE

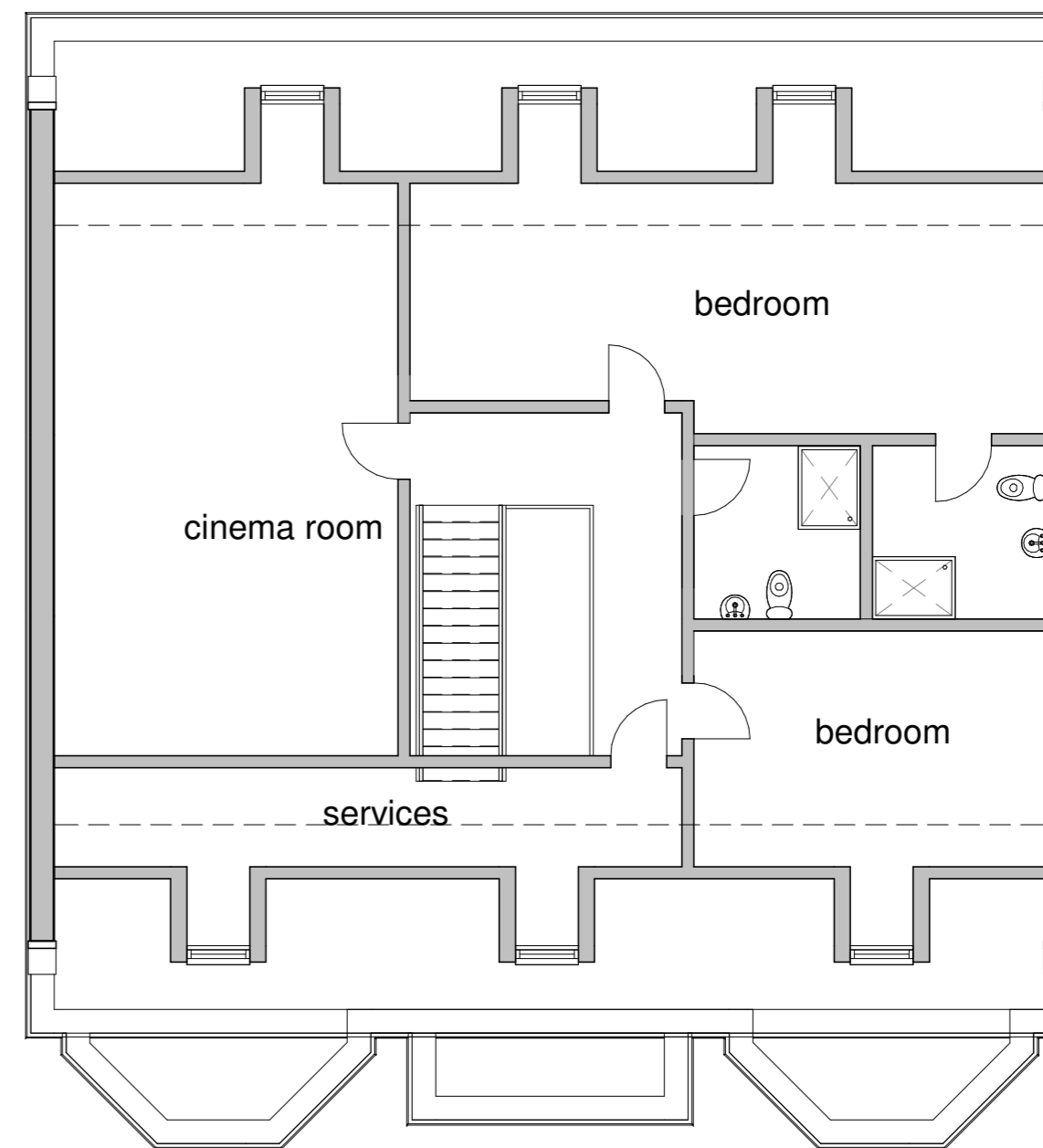
Tel: 01992 766658  
fax: 01992 715406

*The Excitement is Building*

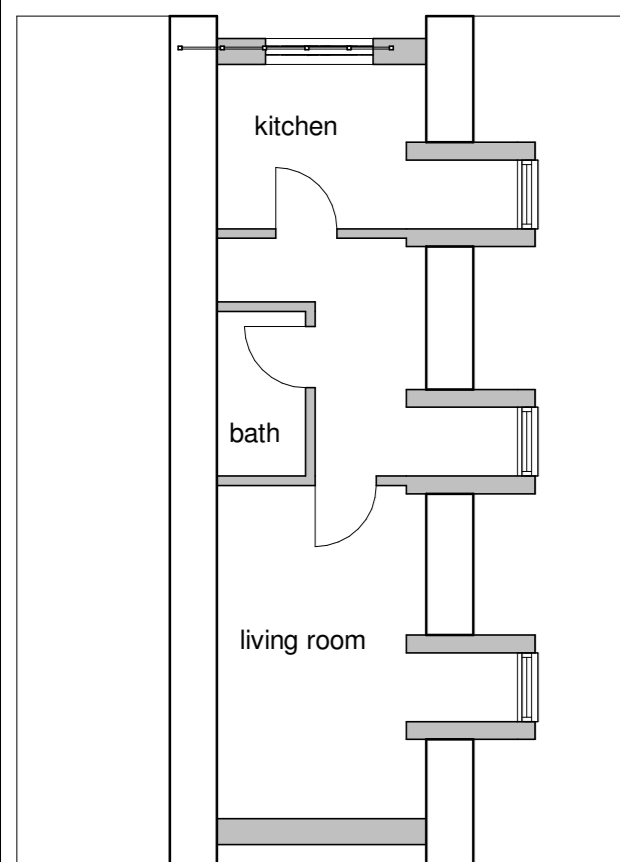
The copyright of this drawing is vested with Chase New Homes and must not be copied or reproduced without the prior consent



**First floor**  
1 : 100



**Second floor**  
1 : 100



REV	AMENDMENTS	DATE
B	general revisions	03/05/2018
A	general revisions	01/05/2018

Drawn by	Date
Author	Issue Date
Scale (@ A2)	Project number
1 : 100	Project Number
TITLE	
First and second floor plans	
PROJECT	
Lake View, Leggatts Park, Potters Bar, EN6 1NZ	
DRG NUMBER	
16 3000-103 B	

© Chase new Homes

04/05/2018 16:05:24