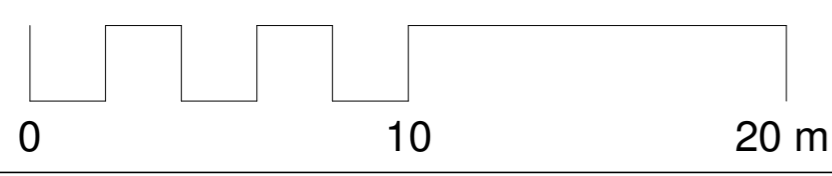
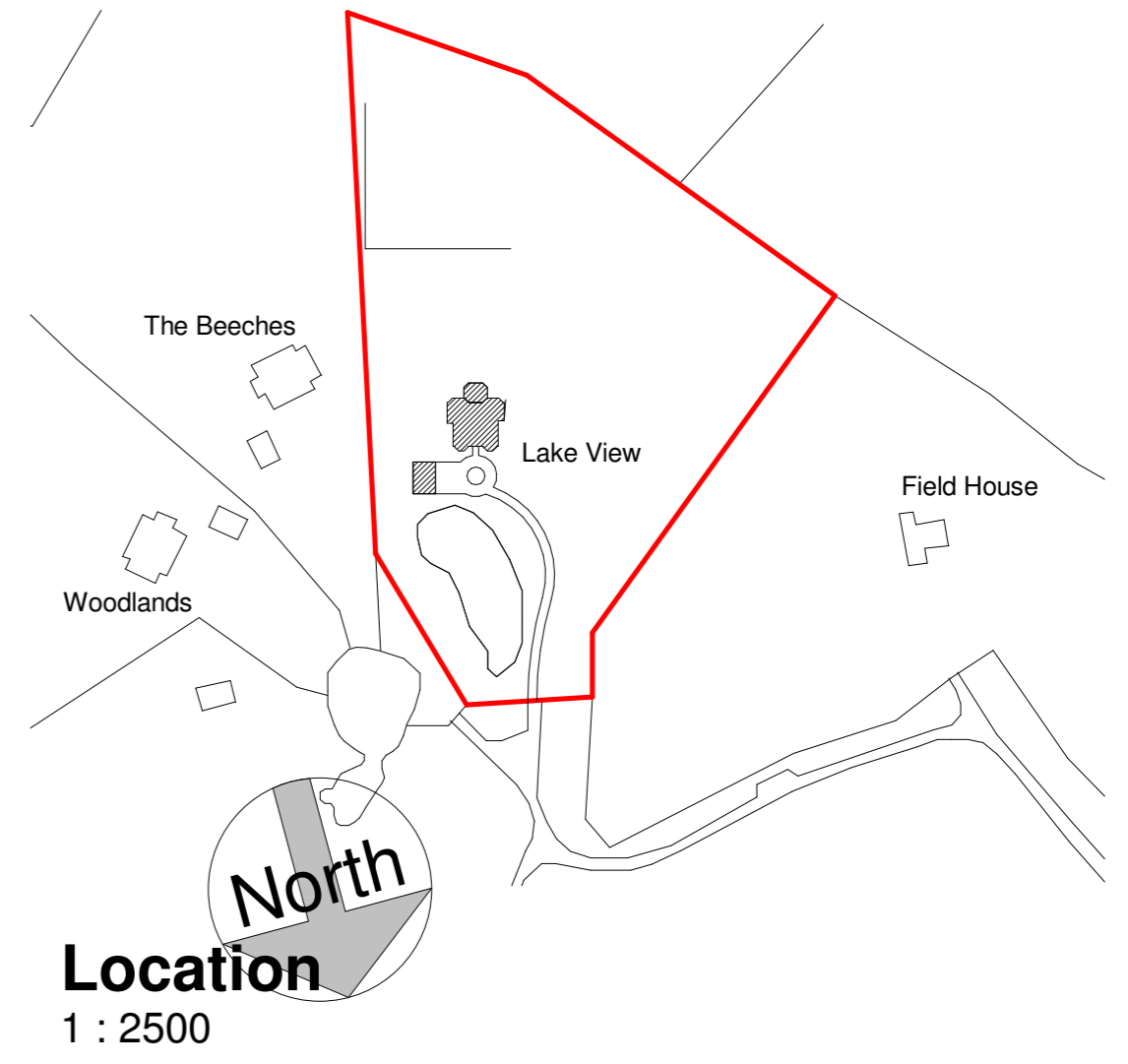
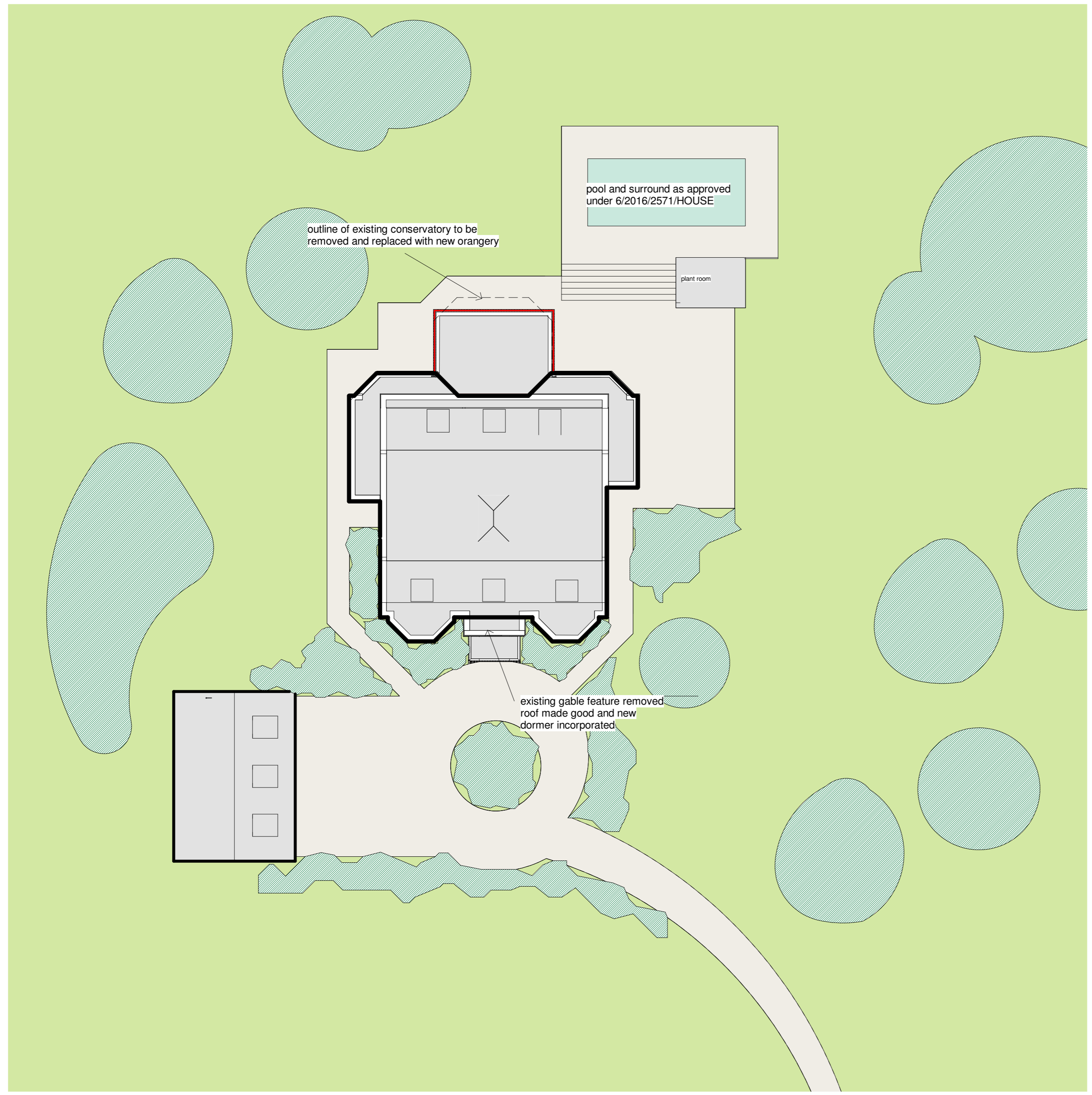




Chase new Homes
 16-18 Howard Business park
 Howard Close
 Waltham Abbey
 Essex
 EN9 1XE
 Tel: 01992 766658
 fax: 01992 715406

The Excitement is Building
 The copyright of this drawing is vested with Chase New Homes and must not be copied or reproduced without the prior consent



Site
1 : 200

REV	AMENDMENTS	DATE
A	general revisions	01/05/2018
Drawn by	Date	
Author	Issue Date	
Scale (@ A2)	Project number	
As indicated	Project Number	
TITLE		
Site plan		
PROJECT		
Lake View, Leggatts Park, Potters Bar, EN6 1NZ		
DRG NUMBER		
16 3000-101 A		
© Chase new Homes		

04/05/2018 16:17:13