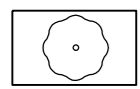
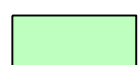
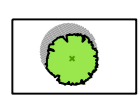
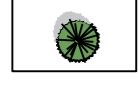
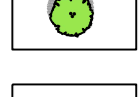

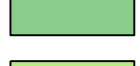



KEY

-  **Existing Trees To Be Retained**
Refer to vegetation retention and removal plan 1226-003 for details
-  **Existing Lawn To Be Retained**
-  **Proposed Deciduous Clear Stem Trees**
-  **Proposed Coniferous Clear Stem Trees**
-  **Proposed Multistem Trees**
-  **Feature hedge to wall**
Clipped Columns, 3m height
-  **Proposed Shrub Planting**
-  **Proposed Amenity Turf**
Tillers 'Arend' turf

- Mix 1 - West Boundary**
- Sesleria autumnalis 60% 2L@ 6 plants per m²
 - Salvia nemorosa 'Caradonna' 25% 2L@ 6 plants per m²
 - Sedum 'Matrona' 15% 2L@ 8 plants per m²

- Mix 2a - West Frontage**
- Anemathelle lessoniana 20% 2L@ 5 plants per m²
 - Carex testacea 15% 3L@ 5 plants per m²
 - Hydrangea 'Limelight' - 15L specimens
 - Liriope muscari 'Big Blue' 10% 2L@ 7 plants per m²
 - Pinus mugo 'Mughus' - 0.75m wide specimens
 - Polystichum setiferum 5% 2L@ 5 plants per m²
 - Sarcococca 'Winter Gem' 25% 2L@ 3 plants per m²
 - Sarcococca 'Winter Gem' - 15L specimens
 - Sesleria autumnalis 25% 2L@ 6 plants per m²

- Mix 2b - West Frontage**
- Anemathelle lessoniana 20% 2L@ 5 plants per m²
 - Anemone 'Honorine Jobert' 10% 2L Specimen plants
 - Calamagrostis 'Karl Foerster' 12.5% 2L@ 5 plants per m²
 - Carex testacea 12.5% 3L@ 5 plants per m²
 - Hydrangea 'Limelight' - 15L specimens
 - Liriope muscari 'Big Blue' 10% 2L@ 7 plants per m²
 - Pinus mugo 'Mughus' - 0.75m wide specimens
 - Polystichum setiferum 5% 2L@ 5 plants per m²
 - Sarcococca 'Winter Gem' 20% 2L@ 3 plants per m²
 - Sarcococca 'Winter Gem' - 15L specimens
 - Sesleria autumnalis 10% 2L@ 6 plants per m²

- Mix 3 - Main Entrance frontage**
- Anemone 'Honorine Jobert' 10% 2L Specimen plants
 - Calamagrostis 'Karl Foerster' 10% 2L@ 5 plants per m²
 - Carex testacea 10% 3L@ 5 plants per m²
 - Cornus sanguinea 'Midwinter Fire' 5% 3L@ 4 plants per m²
 - Hydrangea 'Limelight' - 15L specimens
 - Liriope muscari 'Big Blue' 10% 2L@ 7 plants per m²
 - Molinia 'Transparent' - 5L specimens
 - Pinus mugo 'Mughus' - 0.75m wide specimens
 - Polystichum setiferum 5% 2L@ 5 plants per m²
 - Prunus 'Low 'n' Green' 5% 2L@ 3 plants per m²
 - Pyracantha 'Red Cushion' 5% 2L@ 3 plants per m²
 - Salvia 'Caradonna' 10% 2L@ 6 plants per m²
 - Sarcococca 'Winter Gem' 10% 2L@ 3 plants per m²
 - Sesleria autumnalis 10% 2L@ 6 plants per m²
 - Sedum 'Matrona' 10% 2L@ 8 plants per m²

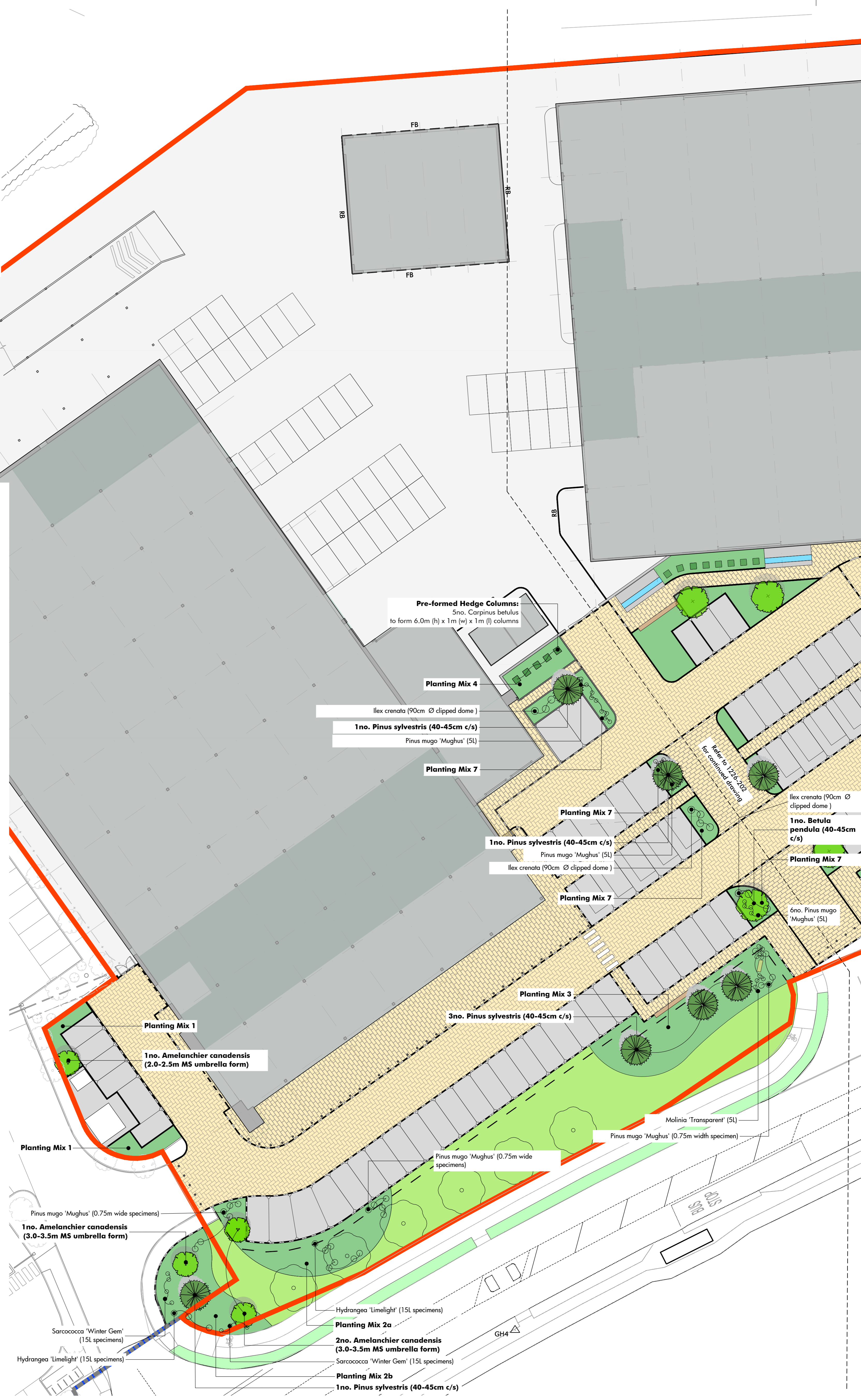
- Mix 4 - Building frontage**
- Veronicastrum 'Lavendelturm' 20% 2L@4/linear m
 - Sesleria autumnalis 80% 2L@ 6 plants per m²

- Mix 5 - Statement beds**
- Anemathelle lessoniana 15% 2L@ 5 plants per m²
 - Ilex crenata - 90cm Ø clipped dome
 - Molinia 'Transparent' - 5L specimens
 - Pinus mugo 'Mughus' - 0.75m wide specimens
 - Sesleria autumnalis 55% 2L@ 5 plants per m²
 - Salvia 'Caradonna' 15% 2L@ 6 plants per m²
 - Sedum 'Matrona' 15% 2L@ 8 plants per m²

- Mix 6 - CP statement**
- Sesleria autumnalis 100% 2L@ 6 plants per m²
 - Pinus mugo 'Mughus' - 0.75m wide specimens

- Mix 7 - CP beds**
- Anemathelle lessoniana 15% 2L@ 5 plants per m²
 - Ilex crenata - 90cm Ø clipped dome
 - Pinus mugo 'Mughus' - 5L specimens
 - Sesleria autumnalis 55% 2L@ 5 plants per m²
 - Salvia 'Caradonna' 15% 2L@ 6 plants per m²
 - Sedum 'Matrona' 15% 2L@ 8 plants per m²

- Mix 8 - East frontage**
- Calamagrostis 'Karl Foerster' 15% 2L@ 5 plants per m²
 - Carex testacea 15% 3L@ 5 plants per m²
 - Cornus sanguinea 'Midwinter Fire' 10% 3L@ 4 plants per m²
 - Liriope muscari 'Big Blue' 15% 2L@ 6 plants per m²
 - Prunus 'Low 'n' Green' 15% 3L@ 3 plants per m²
 - Rosa 'Kent' 15% 3L@ 3.5 plants per m²
 - Sarcococca 'Winter Gem' - 15L specimens
 - Sesleria autumnalis 10% 2L@ 6 plants per m²



Revision	Description	Drawn by	Checked by	Date
-	For Comment	KM	RG	22.02.19
A	Updated to revised site layout	AL	RG	12.09.19
B	Updated for NMA application	JW	SL	07.12.20
C	NMA application	JR	SL	16.12.20
D	NMA application	JR	SL	18.12.20
E	NMA application	KM	SL	29.04.21

This drawing is protected by copyright. Contractors must check all dimensions on site. Only figure dimensions are to be worked from. Discrepancies must be reported to architect before proceeding.
Christophers House, 11-12 High Street, Bath, BA1 5AQ. Tel: 01225 484 690. info@macgregor-smith.co.uk

project	Hatfield Plot 5000A H R Owen	drawn by	KM
status	Updated for NMA application	checked by	RG
title	Planting Plan 1 of 2	date	14.02.19
Xref	xref	scale	1:250@a1
drawing No	1226-201	revision	E