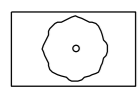
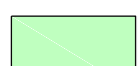
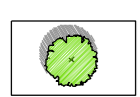
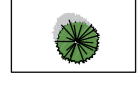
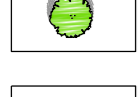





**KEY**

-  **Existing Trees To Be Retained**  
Refer to vegetation retention and removal plan 1226-003 for details
-  **Existing Lawn To Be Retained**
-  **Proposed Deciduous Clear Stem Trees**
-  **Proposed Coniferous Clear Stem Trees**
-  **Proposed Multistem Trees**
-  **Feature hedge to wall**  
Clipped Columns, 3m height
-  **Proposed Shrub Planting**
-  **Proposed Amenity Turf**  
Tillers 'Arend' turf

**Mix 1 - West boundary**

Anemathelle lessoniana	15%	2L@ 5 plants per m <sup>2</sup>
Sesleria autumnalis	55%	2L@ 5 plants per m <sup>2</sup>
Salvia 'Carradonna'	15%	2L@ 6 plants per m <sup>2</sup>
Sedum 'Matrona'	15%	2L@ 8 plants per m <sup>2</sup>

**Mix 2 - West frontage**

Anemathelle lessoniana	20%	2L@ 5 plants per m <sup>2</sup>
Anemone 'Honorine Jobert'	10%	2L Specimen plants
Calamagrostis 'Karl Foerster'	12.5%	2L@ 5 plants per m <sup>2</sup>
Carex testacea	12.5%	3L@ 5 plants per m <sup>2</sup>
Hydrangea 'Limelight'	-	15L specimens
Liriope muscari 'Big Blue'	10%	2L@ 7 plants per m <sup>2</sup>
Molinia 'Transparent'	-	5L specimens
Pinus mugo 'Mughus'	-	0.75m wide specimens
Polystichum setiferum	5%	2L@ 5 plants per m <sup>2</sup>
Sarcococca 'Winter Gem'	20%	2L@ 3 plants per m <sup>2</sup>
Sarcococca 'Winter Gem'	-	15L specimens
Sesleria autumnalis	10%	2L@ 6 plants per m <sup>2</sup>

**Mix 3 - Main Entrance frontage**

Anemone 'Honorine Jobert'	10%	2L Specimen plants
Calamagrostis 'Karl Foerster'	10%	2L@ 5 plants per m <sup>2</sup>
Carex testacea	10%	3L@ 5 plants per m <sup>2</sup>
Cornus sanguinea 'Midwinter Fire'	5%	3L@ 4 plants per m <sup>2</sup>
Hydrangea 'Limelight'	-	15L specimens
Liriope muscari 'Big Blue'	10%	2L@ 7 plants per m <sup>2</sup>
Molinia 'Transparent'	-	5L specimens
Pinus mugo 'Mughus'	-	0.75m wide specimens
Polystichum setiferum	5%	2L@ 5 plants per m <sup>2</sup>
Prunus 'Low 'n' Green'	5%	2L@ 3 plants per m <sup>2</sup>
Pyracantha 'Red Cushion'	5%	2L@ 3 plants per m <sup>2</sup>
Salvia 'Carradonna'	10%	2L@ 6 plants per m <sup>2</sup>
Sarcococca 'Winter Gem'	10%	2L@ 3 plants per m <sup>2</sup>
Sesleria autumnalis	10%	2L@ 6 plants per m <sup>2</sup>
Sedum 'Matrona'	10%	2L@ 8 plants per m <sup>2</sup>

**Mix 4 - Building frontage**

Veronicastrum 'Lavendelturm'	20%	2L@4/linear m
Sesleria autumnalis	80%	2L @ 6 plants per m <sup>2</sup>

**Mix 5 - Statement beds**

Anemathelle lessoniana	15%	2L@ 5 plants per m <sup>2</sup>
Ilex crenata	-	90cm Ø clipped dome
Molinia 'Transparent'	-	5L specimens
Pinus mugo 'Mughus'	-	0.75m wide specimens
Sesleria autumnalis	55%	2L@ 5 plants per m <sup>2</sup>
Salvia 'Carradonna'	15%	2L@ 6 plants per m <sup>2</sup>
Sedum 'Matrona'	15%	2L@ 8 plants per m <sup>2</sup>

**Mix 6 - CP statement**

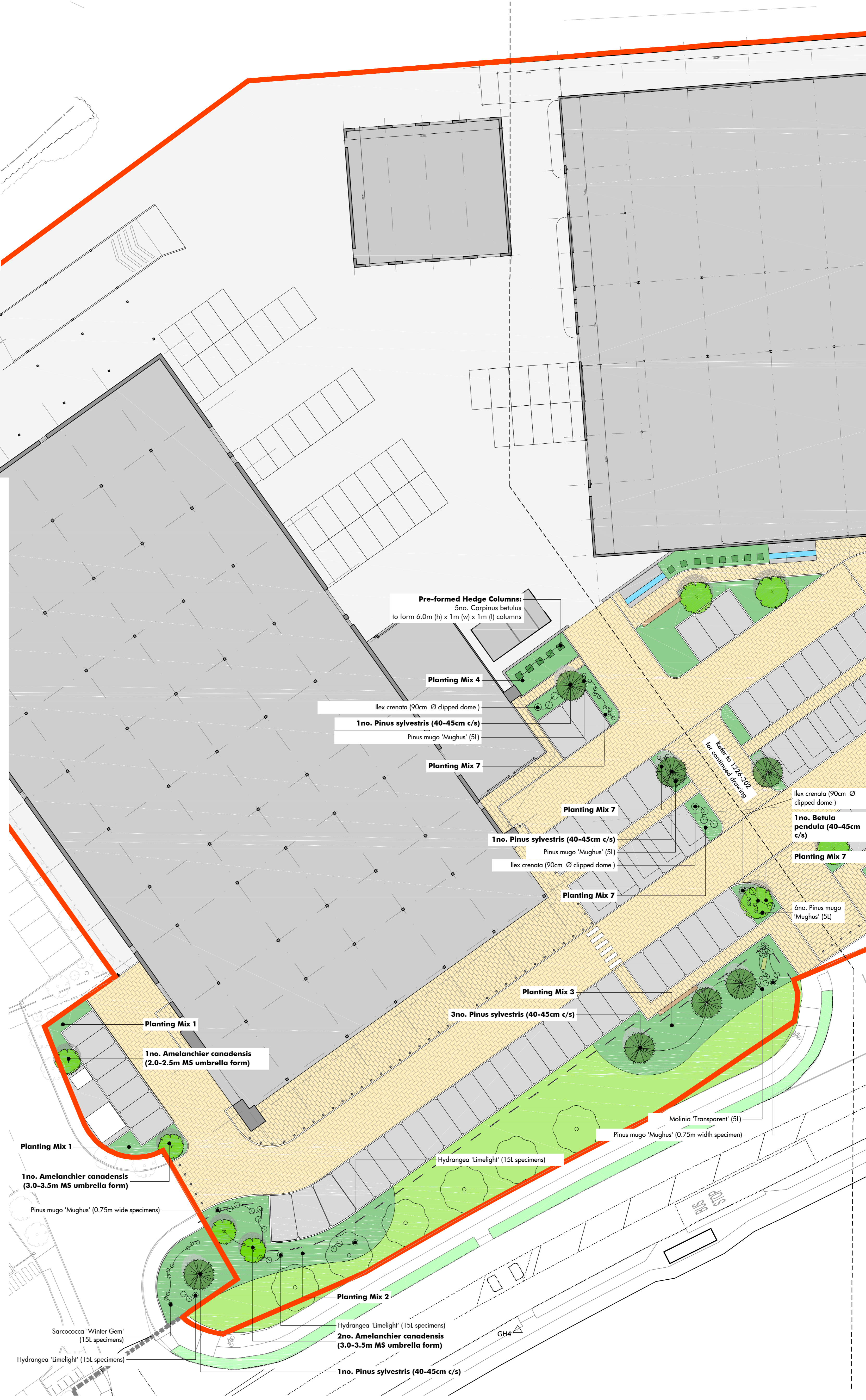
Sesleria autumnalis	100%	2L @ 6 plants per m <sup>2</sup>
Pinus mugo 'Mughus'	-	0.75m wide specimens

**Mix 7 - CP beds**

Anemathelle lessoniana	15%	2L@ 5 plants per m <sup>2</sup>
Ilex crenata	-	90cm Ø clipped dome
Pinus mugo 'Mughus'	-	5L specimens
Sesleria autumnalis	55%	2L@ 5 plants per m <sup>2</sup>
Salvia 'Carradonna'	15%	2L@ 6 plants per m <sup>2</sup>
Sedum 'Matrona'	15%	2L@ 8 plants per m <sup>2</sup>

**Mix 8 - East frontage**

Calamagrostis 'Karl Foerster'	15%	2L@ 5 plants per m <sup>2</sup>
Carex testacea	15%	3L @ 5 plants per m <sup>2</sup>
Cornus sanguinea 'Midwinter Fire'	10%	3L @ 4 plants per m <sup>2</sup>
Liriope muscari 'Big Blue'	15%	2L @ 6 plants per m <sup>2</sup>
Prunus 'Low 'n' Green'	15%	3L @ 3 plants per m <sup>2</sup>
Rosa 'Kent'	15%	3L @ 3.5 plants per m <sup>2</sup>
Sarcococca 'Winter Gem'	-	15L specimens
Sesleria autumnalis	10%	2L@ 6 plants per m <sup>2</sup>



Planting Mix 1

Planting Mix 1

1no. Amelanchier canadensis (2.0-2.5m MS umbrella form)

1no. Amelanchier canadensis (3.0-3.5m MS umbrella form)

Pinus mugo 'Mughus' (0.75m wide specimens)

Pre-formed Hedge Columns:  
5no. Carpinus betulus to form 6.0m (h) x 1m (w) x 1m (l) columns

Planting Mix 4

Ilex crenata (90cm Ø clipped dome)

1no. Pinus sylvestris (40-45cm c/s)

Pinus mugo 'Mughus' (5L)

Planting Mix 7

1no. Pinus sylvestris (40-45cm c/s)

Pinus mugo 'Mughus' (5L)

Ilex crenata (90cm Ø clipped dome)

Planting Mix 7

Planting Mix 7

1no. Betula pendula (40-45cm c/s)

Planting Mix 7

6no. Pinus mugo 'Mughus' (5L)

Planting Mix 3

3no. Pinus sylvestris (40-45cm c/s)

Molinia 'Transparent' (5L)

Pinus mugo 'Mughus' (0.75m width specimen)

Hydrangea 'Limelight' (15L specimens)

Planting Mix 2

Hydrangea 'Limelight' (15L specimens)

2no. Amelanchier canadensis (3.0-3.5m MS umbrella form)

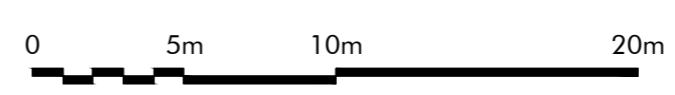
1no. Pinus sylvestris (40-45cm c/s)

Sarcococca 'Winter Gem' (15L specimens)

Hydrangea 'Limelight' (15L specimens)

GH4

Revision	Description	Drawn by	Checked by	Date
-	For Comment	KM	RG	22.02.19
A	Updated to revised site layout	AL	RG	12.09.19
B	Updated for NMA application	JW	SL	07.12.20
C	NMA application	JR	SL	16.12.20
D	NMA application	JR	SL	18.12.20



Macgregor • Smith  
Landscape Architecture

project	Hatfield Plot 5000A H R Owen	drawn by	KM
status	Updated for NMA application	checked by	RG
title	Planting Plan 1 of 2	date	14.02.19
Xref	xref	scale	1:250@a1
drawing No	1226-201	revision	D

This drawing is protected by copyright. Contractors must check all dimensions on site. Only figure dimensions are to be worked from. Discrepancies must be reported to architect before proceeding.  
Christopher House, 11-12 High Street, Bath, BA1 3AQ. Tel: 01225 464 690. info@macgregorsmith.co.uk