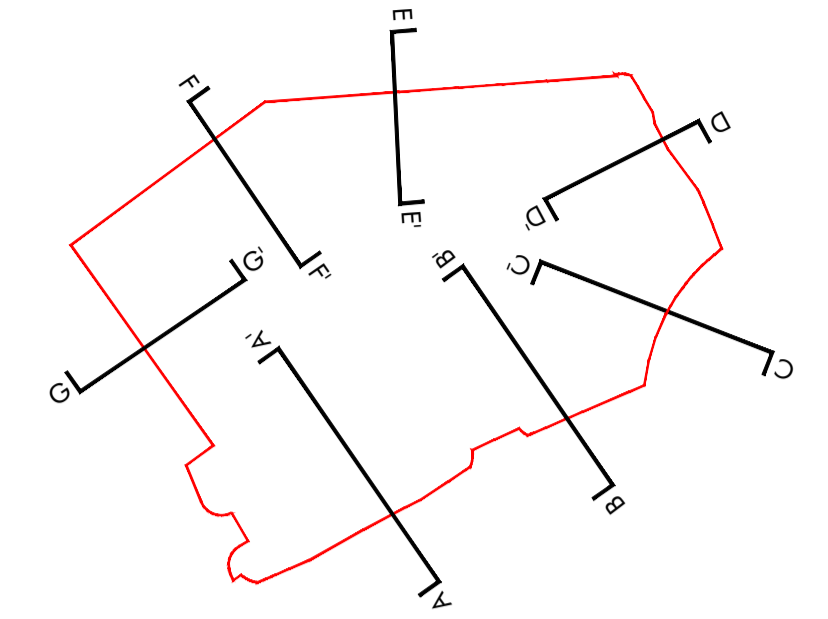
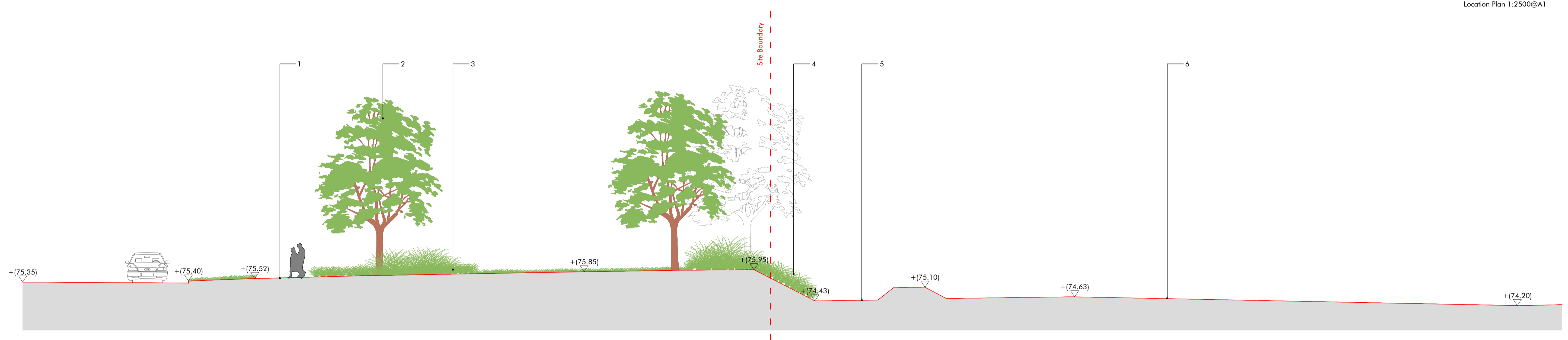


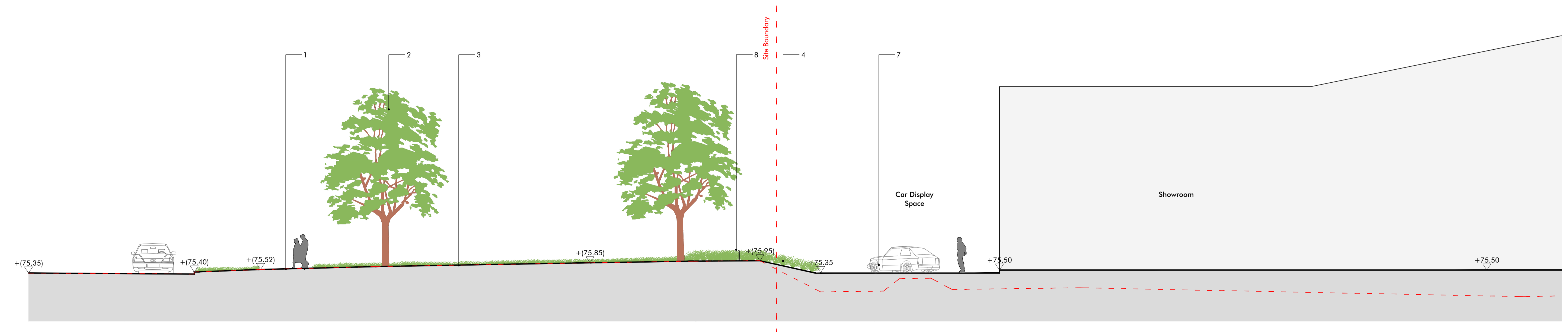
- Key**
- Existing pedestrian footpath
 - Existing tree planting
 - Existing shrub planting to highway
 - Shrub planting to embankment
 - Existing grasscrete access to pump station
 - Existing ground profile to site
 - External car display space
 - Vehicular barriers, 500mm high



Location Plan 1:2500@A1



Existing Condition Section C-C



Proposed Condition Section C-C

Revision	Description	Drawn by	Checked by	Date
-	Draft	AL	RG	25.01.19
A	For Comment	AL	RG	22.02.19
B	Updated to revised site layout	AL	RG	12.09.19
C	Updated for NMA application	JW	SL	07.12.20

Macgregor • Smith
Landscape Architecture

project	Haffield Plot 5100 H R Owen	drawn by	AL
status	Updated for NMA application	checked by	RG
title	Site Sections C-C: Existing & proposed condition	date	22.02.19
Xref	xref	scale	1:100@a1
drawing No	1226-012	revision	C