

Note on Bird and Bat Boxes

3no. Schwegler Bird Boxes:

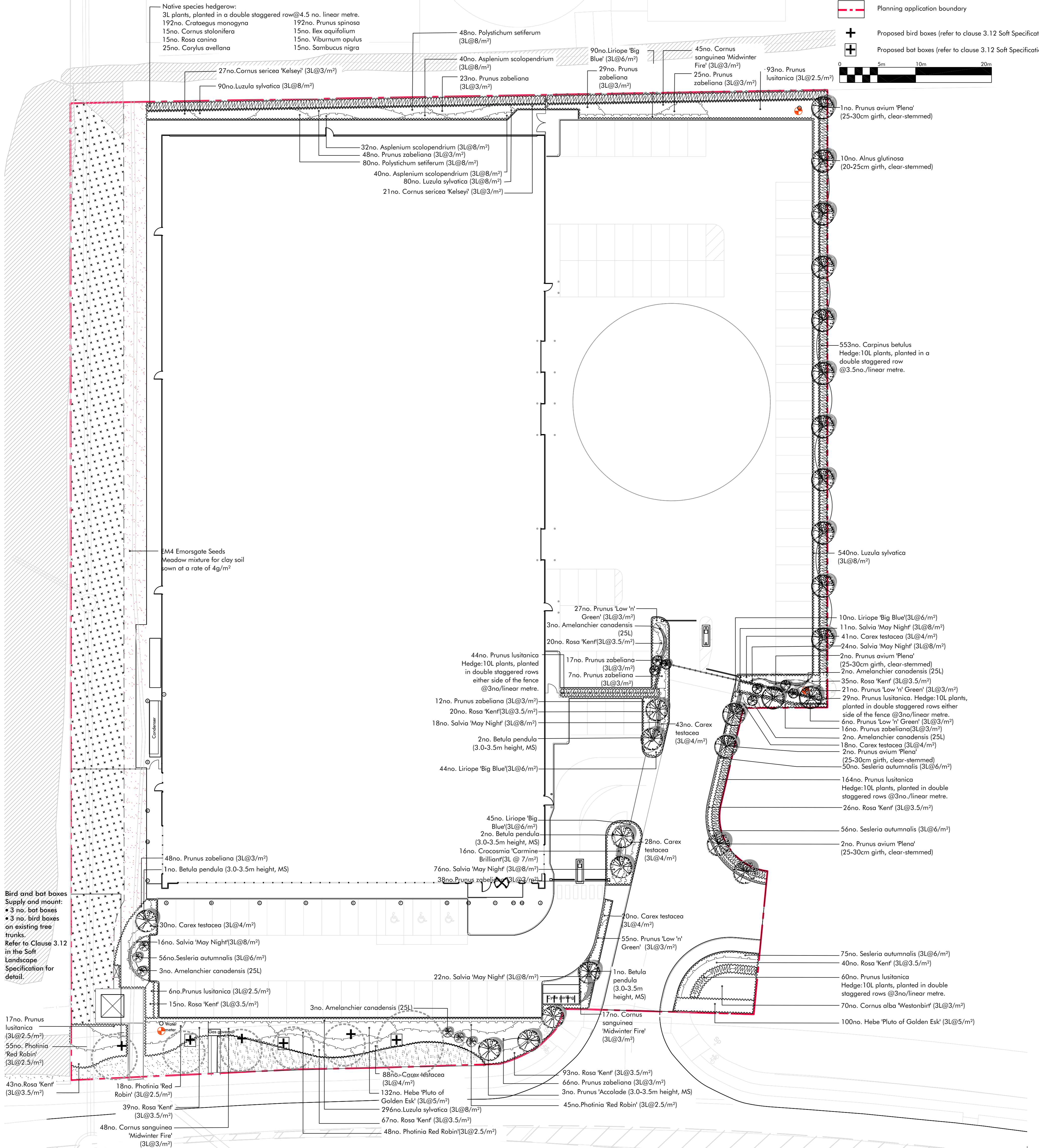
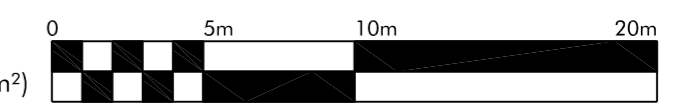
- 1no. Schwegler 1B Nest Box with 26mm entrance hole placed at 2metres above ground level, facing north or north-west;
- 1no. Schwegler 1B Nest Box with 32mm entrance hole placed at 2 metres above ground level, facing north or north-west;
- 1no. Schwegler 2H Open Fronted Bird Box, facing north or north-west;

3no. Schwegler Bat Boxes:

- 3no. FF Schwegler with built-in wooden rear panel supplied with galvanised steel hanger and aluminium tree-friendly rail;
- Install 4-6metres from ground level;
- Face away from excessive lighting;
- Clear away branches to five bats a clear flight path;

KEY

- Existing trees retained
- Existing semi-improved grassland retained
- Existing shrubs retained off-site
- Proposed clear-stemmed trees
- Proposed multi-stemmed trees
- Proposed hedge
- Proposed ornamental shrubs
- Proposed lawn
- Planning application boundary
- Proposed bird boxes (refer to clause 3.12 Soft Specification)
- Proposed bat boxes (refer to clause 3.12 Soft Specification)



Bird and bat boxes
 Supply and mount:
 • 3 no. bat boxes
 • 3 no. bird boxes
 on existing tree trunks.
 Refer to Clause 3.12 in the Soft Landscape Specification for detail.

Revision	Description	Drawn by	Checked by	Date	Revision	Description	Drawn by	Checked by	Date
-	First Draft for Comment	JN	LP	16.03.17	J	Amendments to layout according architect changes. Re-issued for Contractor's Proposals	JN	LP	30.10.2017
A	For Bream Information	JN	LP	20.03.17	K	Amendments to layout according to architect layout changes following ECO 1-3. Issued for Construction	JN	LP	23.11.2017
B	For Information	JN	LP	21.03.17	L	Additional notes added on drawing in accordance with LE05 BREEAM requirements.	JN	LP	02.03.2018
C	For Approval	JN	LP	23.03.17	M	Re-issued for Construction	JN	LP	16.03.2018
D	For Planning	JN	LP	24.03.17	N	Issued for NMA Planning	JN	LP	16.03.2018
E	For Draft Tender	JN	LP	10.04.17			HB	LP	11.07.18
F	For Contractor's Proposals	JN	LP	22.05.17					
G	Re-issued for Contractor's Proposals	JN	LP	05.06.17					
H	Minor amendment. Re-issued for Contractor's Proposals	JN	LP	07.06.17					
I	Amendments to update layout according to architect's drawing	JN	LP	24.10.17					

This drawing is protected by copyright. Contractors must check all dimensions on site. Only figure dimensions are to be worked from. Discrepancies must be reported to architect before proceeding.
 Christopher House, 11-12 High Street, Bath, BA1 5AQ. Tel: 01225 454 690. info@macgregor-smith.co.uk

project	Plot 5000 Hatfield Business Park	drawn by	HB
status	For Planning	checked by	LP
title	Planting Plan	date	11.07.18
xref	xref	scale	1:250@A1
drawing No	1178-201	revision	N