

**KEY**

- Existing trees retained
- Existing semi-improved grassland retained
- Existing shrubs retained off-site
- Proposed clear-stemmed trees
- Proposed multi-stemmed trees
- Proposed hedge
- Proposed ornamental shrubs
- Proposed lawn
- Planning application boundary
- Proposed bird boxes (refer to clause 3.12 Soft Specification)
- Proposed bat boxes (refer to clause 3.12 Soft Specification)



**Note on Bird and Bat Boxes**

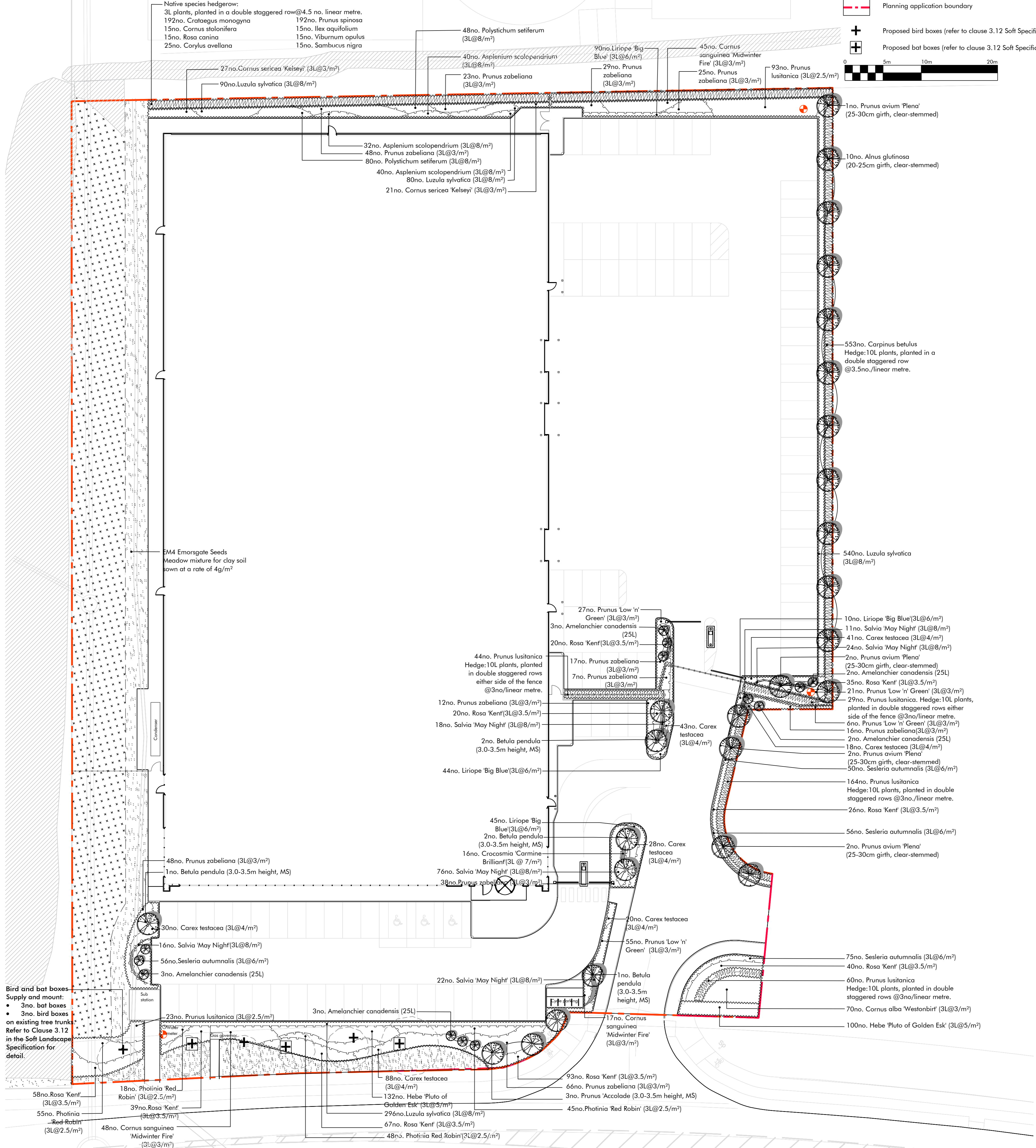
**3no. Schwengler Bird Boxes:**

- 1no. Schwengler 1B Nest Box with 26mm entrance hole placed at 2metres above ground level, facing north or north-west;
- 1no. Schwengler 1B Nest Box with 32mm entrance hole placed at 2 metres above ground level, facing north or north-west;
- 1no. Schwengler 2H Open Fronted Bird Box, facing north or north-west;

**3no. Schwengler Bat Boxes:**

- 3no. FF Schwengler with built-in wooden rear panel supplied with galvanised steel hanger and aluminium tree-friendly rail;
- Install 4-6metres from ground level;
- Face away from excessive lighting;
- Clear away branches to five bats a clear flight path;

Native species hedgerow:  
3L plants, planted in a double staggered row@4.5 no./linear metre.  
192no. Crataegus monogyna      192no. Prunus spinosa  
15no. Cornus stolonifera      15no. Ilex aquifolium  
15no. Rosa canina      15no. Viburnum opulus  
25no. Corylus avellana      15no. Sambucus nigra



Bird and bat boxes supply and mount:  
• 3no. bird boxes on existing tree trunks  
Refer to Clause 3.12 in the Soft Landscape Specification for detail.

Revision	Description	Drawn by	Checked by	Date	Revision	Description	Drawn by	Checked by	Date
-	First Draft for Comment	IN	LP	16.03.17	J	Amendments to layout according architect changes. Re-issued for Contractor's Proposals	IN	LP	30.10.2017
A	For Bream Information	IN	LP	20.03.17	K	Amendments to layout according to architect layout changes following ECO 1-3. Issued for Construction	IN	LP	23.11.2017
B	For Information	IN	LP	21.03.17	L	Additional notes added on drawing in accordance with LE05 BREEAM requirements.	IN	LP	02.03.2018
C	For Approval	IN	LP	23.03.17	M	Re-issued for Construction	IN	LP	16.03.2018
D	For Planning	IN	LP	24.03.17					
E	For Draft Tender	IN	LP	10.04.17					
F	For Contractor's Proposals	IN	LP	22.05.17					
G	Re-issued for Contractor's Proposals	IN	LP	05.06.17					
H	Minor amendment. Re-issued for Contractor's Proposals	IN	LP	07.06.17					
I	Amendments to update layout according to architect's drawing	IN	LP	24.10.17					

project	Plot 5000 Hatfield Business Park	drawn by	IN
status	For Planning	checked by	LP
title	Planting Plan	date	16.03.17
Xref	xref	scale	1:250@a1
drawing No	1178-201	revision	M

This drawing is protected by copyright. Contractors must check all dimensions on site. Only figure dimensions are to be worked from. Discrepancies must be reported to architect before proceeding. Christopher House, 11-12 High Street, Bath BA1 5AQ. Tel: 01225 464 690. info@macgregorsmith.co.uk