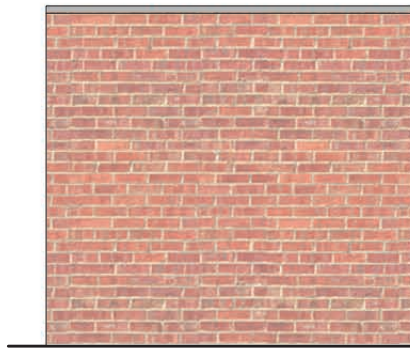
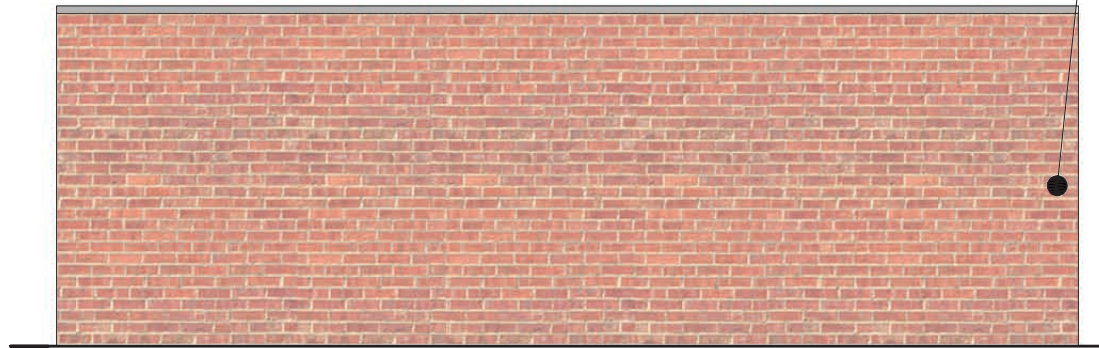


5 Section
1:50

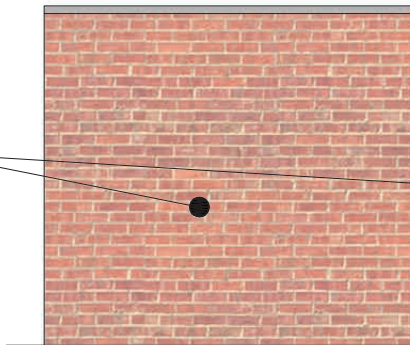
Finish Material to be
Bricks Tigra Multi
Traditional Brick
and Stone



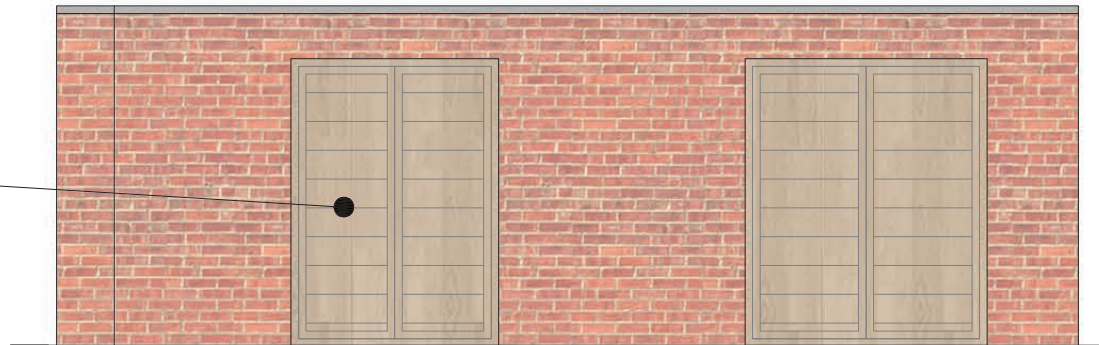
3 Side Elevation
1:50



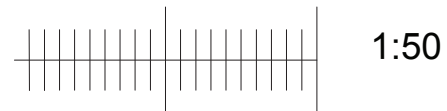
4 Rear Elevation
1:50



1 Side Elevation
1:50



2 Front Elevation
1:50



ARCHITECTS
INTERIOR DESIGNERS
PARTY WALL SURVEYORS
PLANNING CONSULTANTS

Hertfordshire Office
25 Tudor Hall
Brewery Road
Hoddesdon, Herts
EN11 8FP

London Office
9 Devonshire square
London
EC2M 4YF

01992 469001
info@dpa-architects.co.uk
www.dpa-architects.co.uk

Client Ludgate Property Development Ltd.

Site address Land Adjacent to Flats
at 37- 48 Lambs Close
Cuffley , Herts
EN6 4HQ

Project Description Demolition of Existing Garages and
Erection of Two Flats Together with
Parking and the Retention of 21
Existing Spaces of the Flats in
Lambs Close

Drawing Title Proposed bricks refuse
bin enclosure

Drawn LP

Checked by DP

Issued for Planning Approval

Scale 1.200@A4

Drawing No. 1139 308

Date 20160926

Revisions Doc B
2016 12 06 sliding doors in the
refuse bin storage