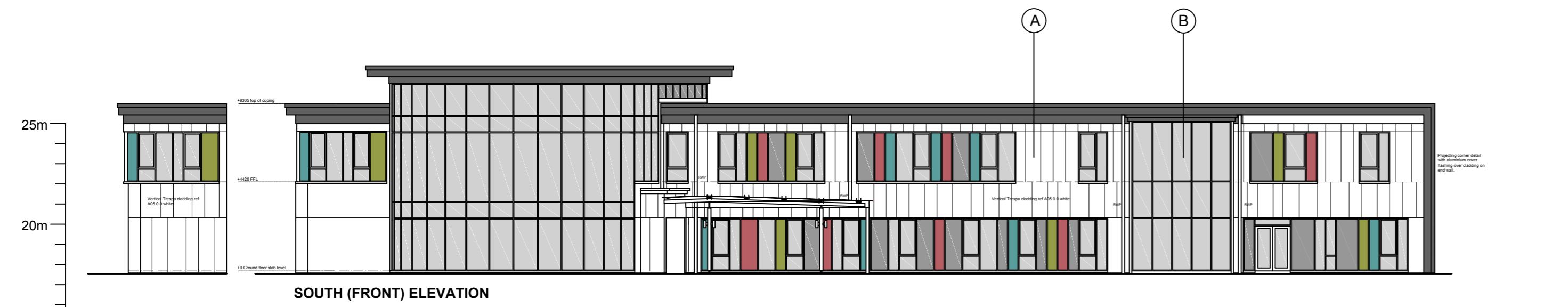


Revisions:
A. 2017-04-18 Second non-material planning application.



SOUTH (FRONT) ELEVATION



EAST ELEVATION (at entrance)



WEST ELEVATION



NORTH (REAR) ELEVATION



EAST ELEVATION

Key to finishes:

- A Trespa A05.0.0 white rainscreen cladding.
- B RAL 7015 aluminium glazed curtain walling.
- C Attenuated P.P.C RAL 7015 dark grey louvre plant deck screens.
- D P.P.C aluminum projecting eaves dark grey.
- E Trespa NM03 Corroded Green rainscreen cladding.
- F P.P.C aluminum windows and curtain walling frames.
- G Trespa A21.7.0 Steel Grey rainscreen cladding.
- H Grey ceramic glazed panels.
- I Ceramic glazed panels, colours as shown.

MANNING ELLIOTT
PARTNERSHIP

Chartered Architects & Designers

Manelli House, Suite 1
Cowper Road, Penrith
Cumbria CA11 9BN

t: 01768 868 800
e: post@manning-elliott.co.uk
w: manning-elliott.co.uk

project title:
ONE HATFIELD
Proposed Healthcare Facility
Hatfield Business Paerki
Hatfield Avenue, Hatfield.

drawing title:
GA Elevations phase 2

issue stage:
Planning application

date: Feb. 2017 drawn: scale @ A2: 1 :200

drawing number: 1005-NMA2-501 revision: A