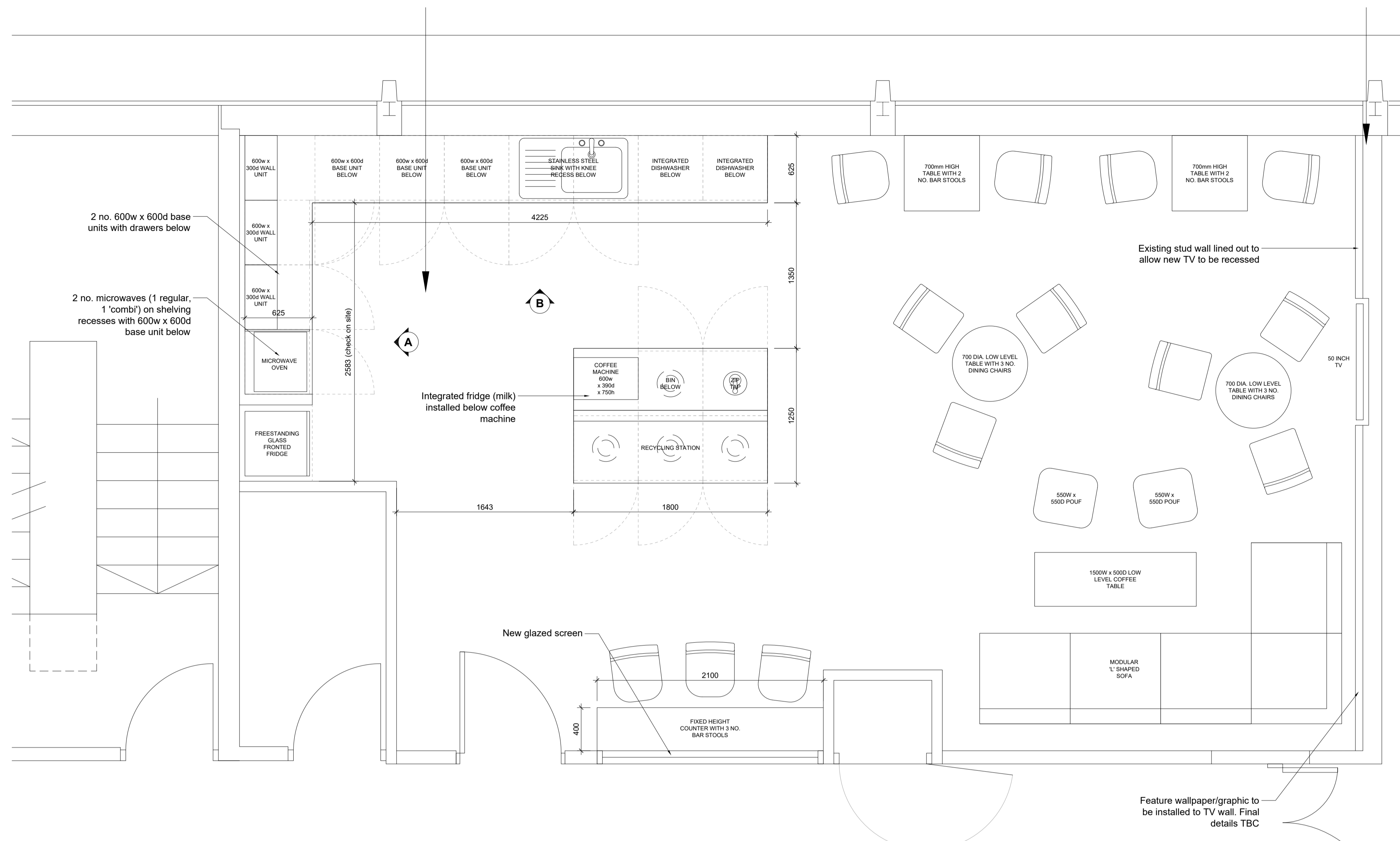
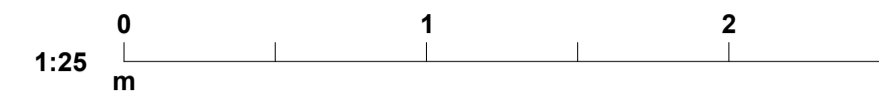
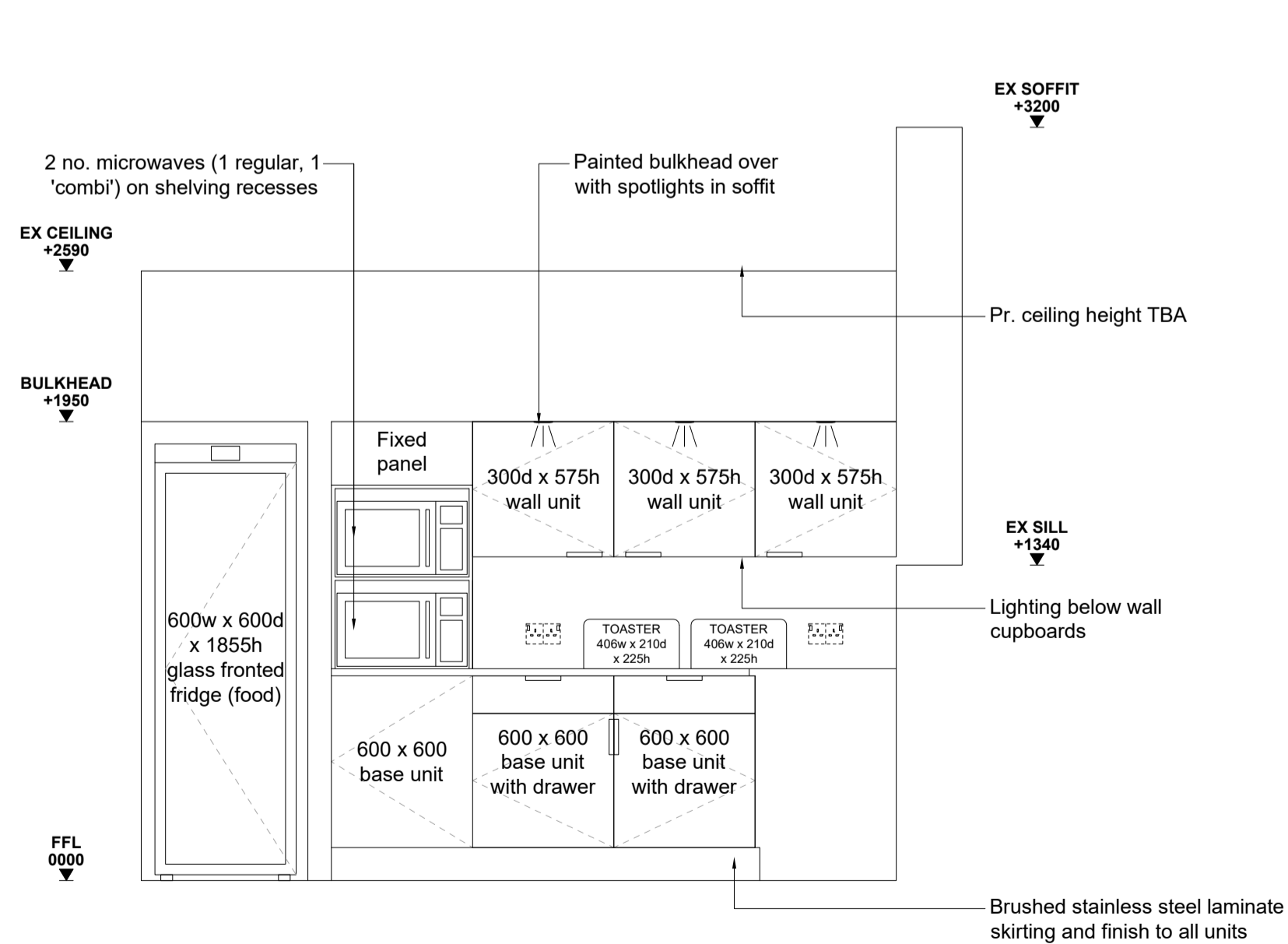


DO NOT SCALE FROM THIS DRAWING. VERIFY ALL DIMENSIONS AND SETTING OUT ON SITE. NOTIFY ANY DISCREPANCIES TO THE ARCHITECT. FOR STRUCTURAL INFORMATION, REFER TO STRUCTURAL ENGINEER'S DRAWINGS. FOR M&E INFORMATION, REFER TO M&E ENGINEER'S AND SUB-CONTRACTOR'S DRAWINGS. FOR HEALTH & SAFETY INFORMATION, REFER TO HEALTH & SAFETY RISK ASSESSMENTS.

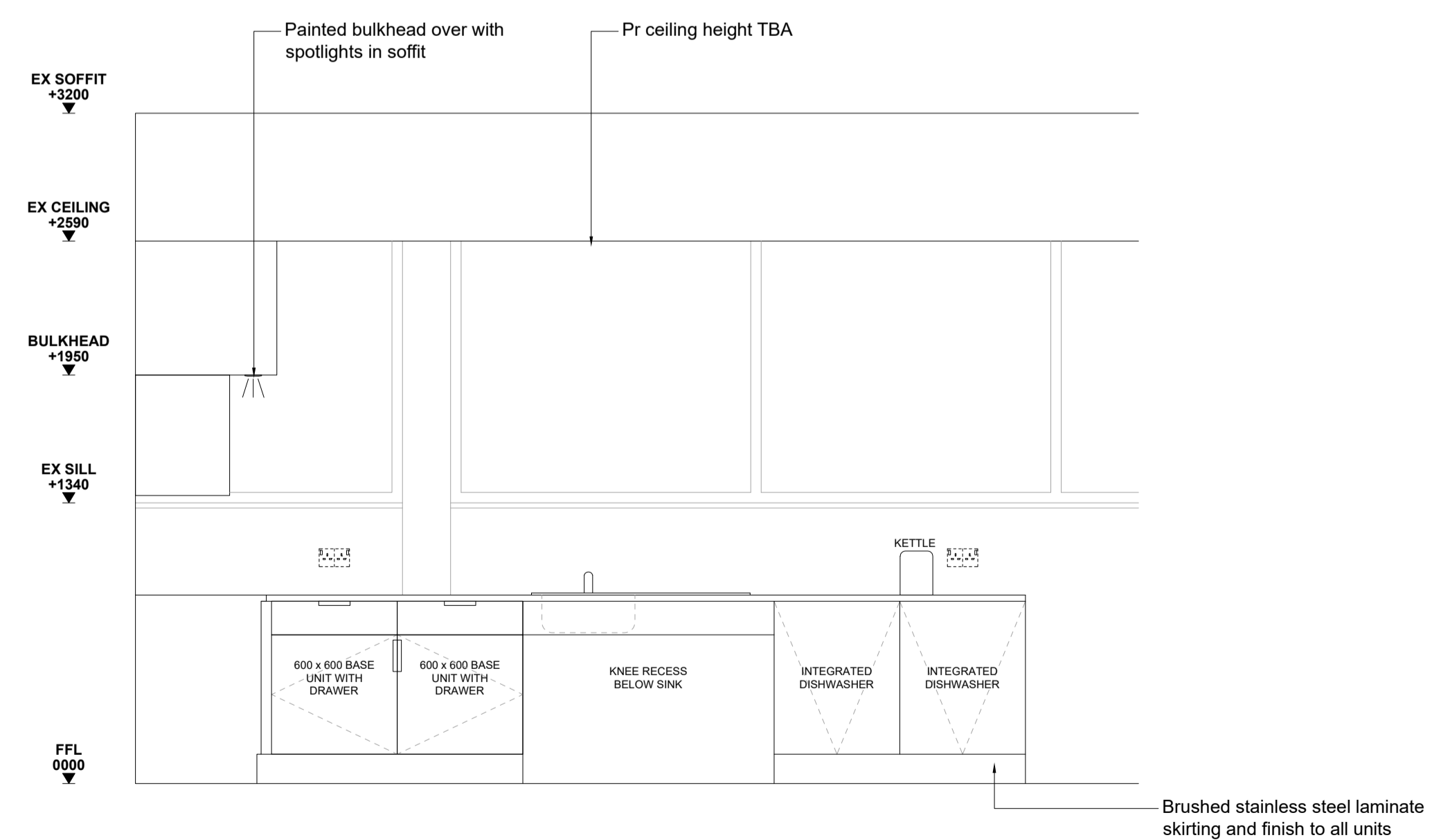


PROPOSED KITCHEN/BREAKOUT SPACE PLAN
SCALE 1:25 @ A1

- Kitchen Fittings/Equipment**
- Stainless steel sink with knee recess below (1 no.)
 - 600w x 600d base unit (4 no.)
 - 600w x 600d base unit with drawer (2 no.)
 - 600w x 300d wall unit (3 no.)
 - Double socket outlets (4 no.)
 - Integrated below counter dishwasher (2 no.)
 - Freestanding glass fronted fridge (1 no.)
 - Microwave oven (2 no.)
 - 6 slice toaster (2 no.)
 - Integrated water boiling tap (1 no.)
 - Freestanding coffee machine (1 no.)
 - Kettle (1 no.)



PROPOSED ELEVATION A
SCALE 1:25 @ A1



PROPOSED ELEVATION B
SCALE 1:25 @ A1

REVISION P0 BY: SDF CHECKED: DATE: 02/12/2019
Initial issue

PLANNING



CLIENT: **DLC HATFIELD CLUB SUPPORT**
PROJECT: **OFFICE REFURBISHMENT**

FIRST FLOOR PROPOSED BREAKOUT SPACE LAYOUT

DRAWING: SDF SCALE: 1:25 @ A1 DATE: DEC 2019

Hadfield Cawkwell Davidson
Broomgrove Lodge, 13 Broomgrove Rd, Sheffield, S10 2LZ T 0114 266 8181 www.hcd.co.uk