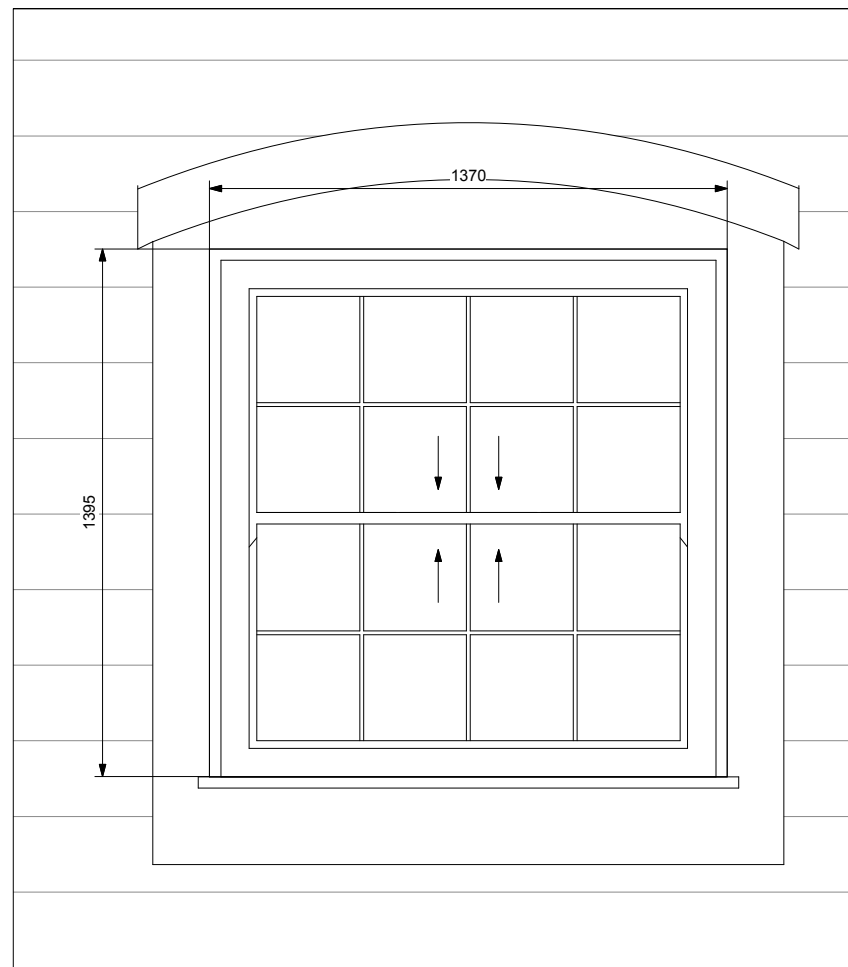


Stonehills West Elevation

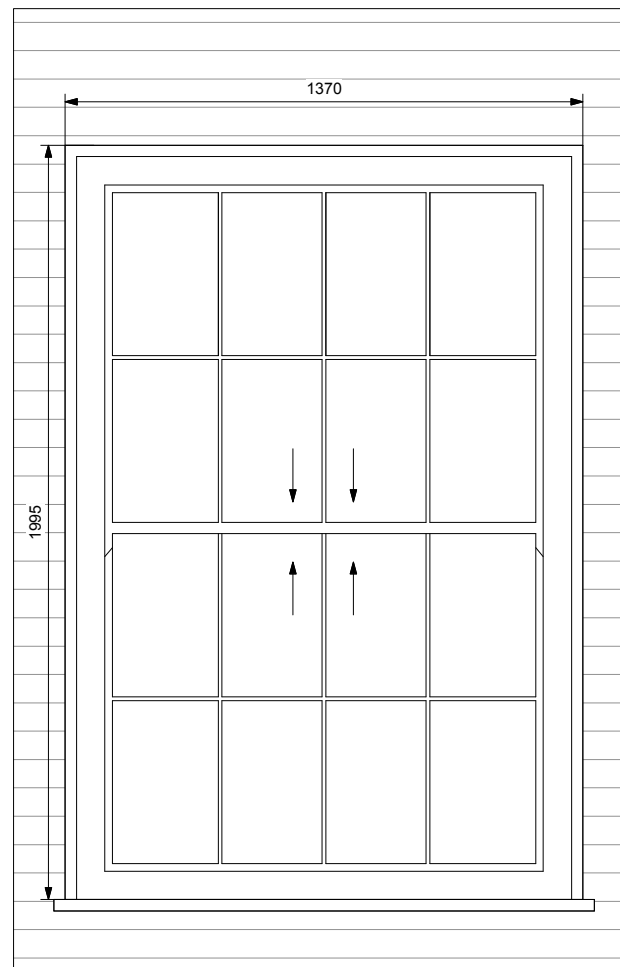
Proposed new and replacement window system:

S719 Heritage vertical sliding sash window by Rehau Ltd.

Configuration as below (centre)
Frame colour: white



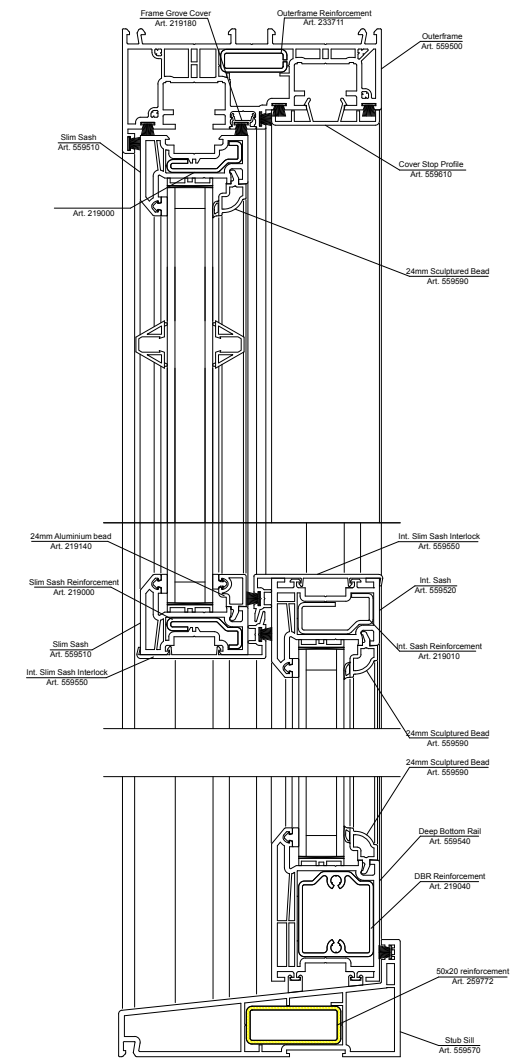
Typical New Dormer Window Detail - Scale 1:10



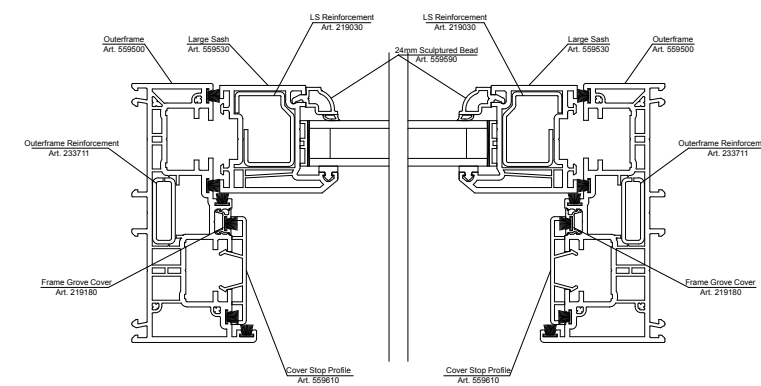
Typical Replacement Window Detail - Scale 1:10



Example image of window system
(NB. for illustrative purposes only - please note difference in fenestration with that proposed)



Detail Section - 1:2



Detail Plan - 1:2

GENERAL NOTES
All setting out must be checked on site. All levels must be checked on site and refer to Ordnance Datum Newlyn unless alternative Datum given. All dimensions must be checked on site. This drawing must be read in conjunction with the relevant specification clauses. This drawing must not be used for land transfer purposes. Areas calculated in accordance with RICS Code of Measuring Practice. This drawing must not be used on site unless issued for construction.
Status: P=Feasibility/Planning T=Tender C=Construction
© 2016 Ben Jones Architects Limited

File Ref: 0754-Plans&Elevs-E6

P2 Window sections amended to show glazing bar 06.12.17

Stonehedge Ltd

Stonehills House, Stonehills
Welwyn, Herts, AL8 6NH

Planning Condition No.5
Dormer window details

1:150, 1:10, 1:2 @A3

December 2017

0754-PC-04

P2

**BEN JONES
ARCHITECTS**

47 Priory Street Lewes BN7 1HJ

T 01273 475526

W benjonesarchitects.co.uk

E mail@benjonesarchitects.co.uk