

---

# Wehothem<sup>®</sup>

*District Heating Pipe System*

KWH Thermopipe

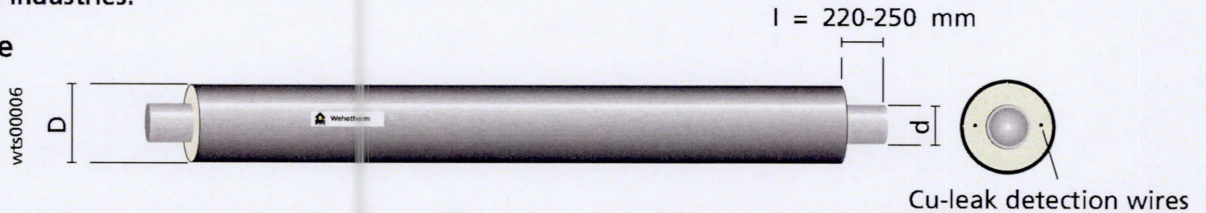


# Single pipe system

Weotherm® Standard is a preinsulated district heating pipe system fulfilling the requirements of European norms; EN 253, 448 and 488 - (rev. 2003).

Single pipe system is certified according to the EHP (Euroheat & Power) guidelines and has the EHP quality mark. Twin pipe system is manufactured according to the recommendations of Svensk Fjärrvärme (Swedish District Heating Association) and has the P mark certified by the SP (Swedish National Testing and research institute). This leaflet contains general product information and the tables of dimensions are based on the above mention recommendations. Other alternatives are available e.g. dimensioning according to the recommendations of Finnish Energy Industries.

## Straight pipe (WTS S P)



DN	Steel pipe d • s [mm]	Insulation class 1		Insulation class 2		Insulation class 3		L [m]
		D [mm]	Weight [kg/m]	D [mm]	Weight [kg/m]	D [mm]	Weight [kg/m]	
20	26,9 • 2,6	90	2,8	110	3,2	125	3,6	12
25	33,7 • 2,6	90	3,2	110	3,7	125	4,0	12
32	42,4 • 2,6	110	4,2	125	4,6	140	4,9	12
40	48,3 • 2,6	110	4,5	125	4,9	140	5,3	12
50	60,3 • 2,9	125	6,0	140	6,4	160	6,9	12
65	76,1 • 2,9	140	7,3	160	7,9	180	8,6	12
80	88,9 • 3,2	160	9,3	180	9,9	200	10,8	12
100	114,3 • 3,6	200	13,5	225	14,6	250	15,7	12, 16
125	139,7 • 3,6	225	16,4	250	17,5	280	19,1	12, 16
150	168,3 • 4,0	250	21,0	280	22,6	315	24,6	12, 16
200	219,1 • 4,5	315	30,8	355	33,5	400	36,8	12, 16
250	273,0 • 5,0	400	44,2	450	48,7	500	53,6	12, 16
300	323,9 • 5,6	450	57,6	500	62,4	560	69,0	12, 16
350	355,6 • 5,6	500	65,3	560	71,9	630	80,5	12, 16
400	406,4 • 6,3	560	83,0	630	91,6	710	102,5	12, 16
450	457,2 • 6,3	560	87,9	630	96,5	710	107,3	12, 16
500	508,0 • 6,3	630	101,0	710	111,9	800	126,0	12, 16
600	610,0 • 7,1	710	131,6	800	145,7	900	163,1	12, 16

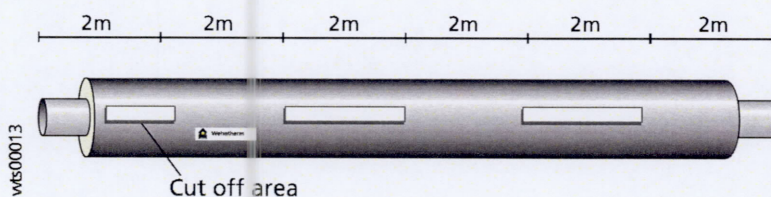
Dimensions DN700..1200 on request.

Preinsulated pipes and fittings can be manufactured with leak detection wires.

## Bended pipe (WTS S PB)



## Matching pipes (WTS S PCUT)



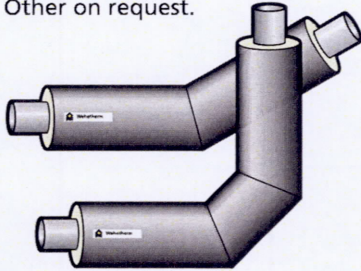
KWH Thermopipe, all rights reserved. Updated 04/2008.

# Single pipe system

## Elbow

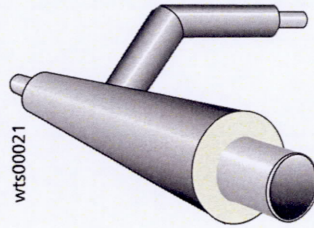
(WTS S E)

Standard angles 15°, 30°, 45°,  
60°, 75° and 90°.  
Other on request.



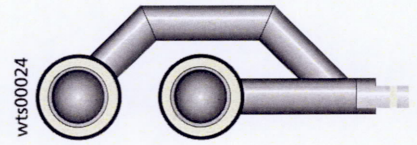
## Elevated tee

(WTS S E-T)



## Straight and jump tee (pair)

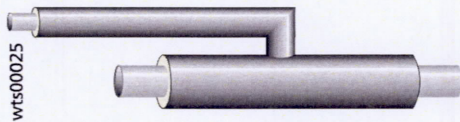
(WTS S SJT)



## Parallel tee

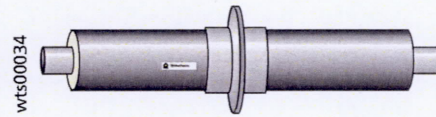
(WTS S P-T)

Branch max DN200.



## Anchor point

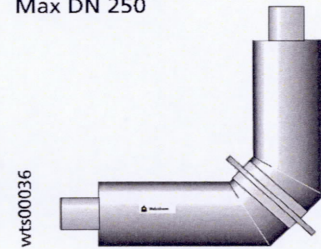
(WTS S AP)



## Elbow anchor point

(WTS S EA)

Max DN 250



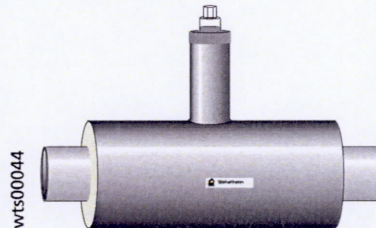
## Preinsulated reducer

(WTS S RED), L=1m.



## Shut-off valve

(WTS S S-V)

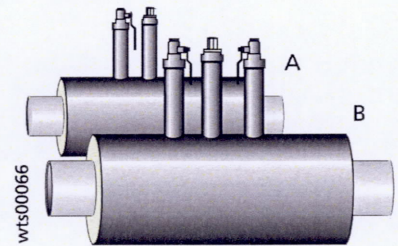


## Combination valve

model A and B (WTS S CV)

A = DN 25.. DN 65.

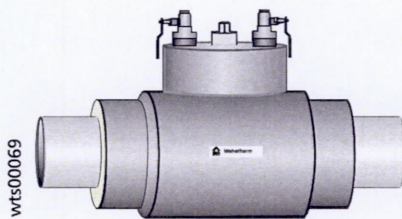
B = DN 80.. DN 150.



## Combination valve

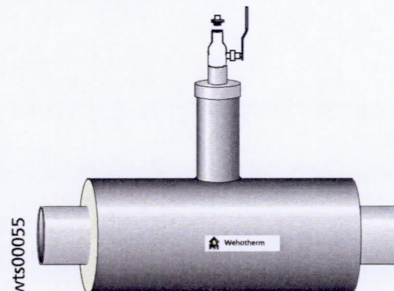
model C (WTS S CV)

C = DN 200.. DN 250



## Drain-/air release valve

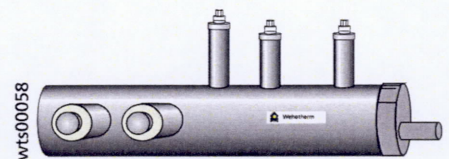
(WTS S A-V)



## Air release combination valve

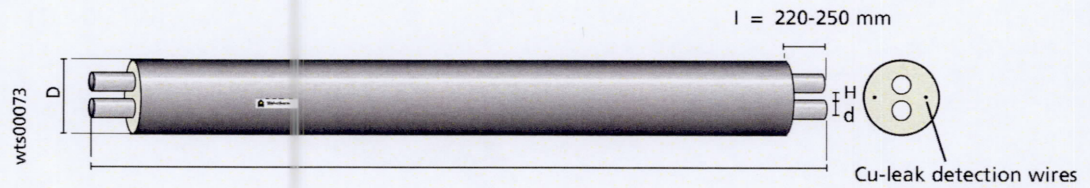
model F (WTS S DAVC-F)

Branch max. DN 20.. DN 80.



# Twin pipe system

## Straight pipe (WTS S2-P)

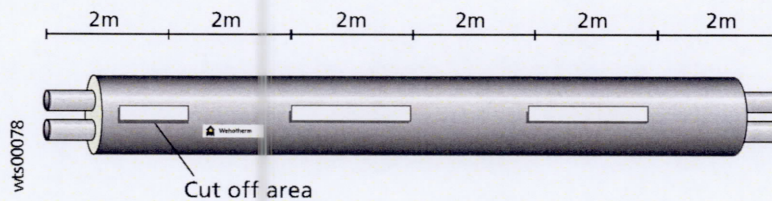


Steel pipe		D [mm]	H [mm]	Weight [kg/m]	L [m]
DN	d • s [mm]				
20+20	26,9 • 2,6	125	19	5,2	12
25+25	33,7 • 2,6	140	19	6,3	12
32+32	42,4 • 2,6	160	19	7,9	12
40+40	48,3 • 2,6	160	19	8,6	12
50+50	60,3 • 2,9	200	20	12,2	12
65+65	76,1 • 2,9	225	20	15,3	12
80+80	88,9 • 3,2	250	25	19,2	12
100+100	114,3 • 3,6	315	25	28,2	12, 16
125+125	139,7 • 3,6	400	30	37,7	12, 16
150+150	168,3 • 4,0	450	40	49,3	12, 16
200+200	219,1 • 4,5	560	45	73,3	12, 16
250+250	273,0 • 5,0	710	45	107,5	12, 16

## Bended pipe (WTS S2-PB)



## Matching pipe (WTS S2-PCUT)

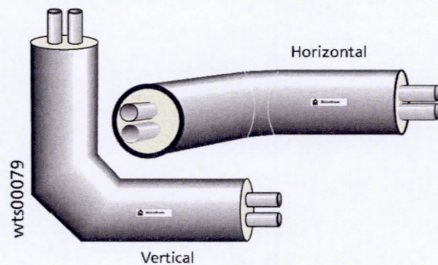


# Twin pipe system

## Elbow

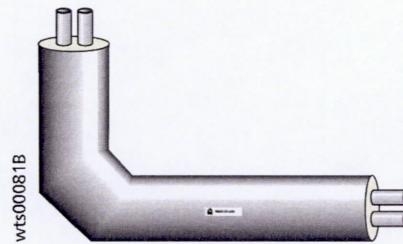
(WTS S2-E)

Standard angles 15°, 30°, 45°,  
60°, 75° and 90°.  
Other on request.



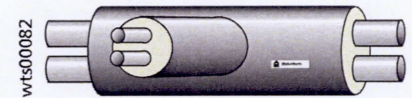
## House entry elbow

(WTS S2-E V 1,5)



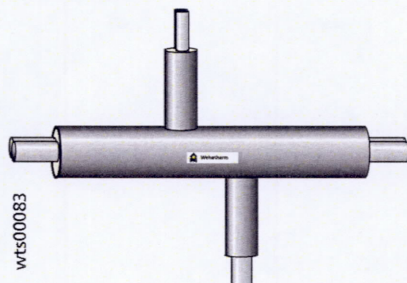
## Tee

(WTS S2-T)



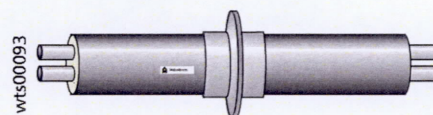
## Cross tee

(WTS S2-CT)



## Anchor point

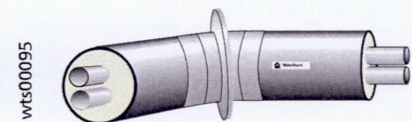
(WTS S2-AP)



## Elbow anchor

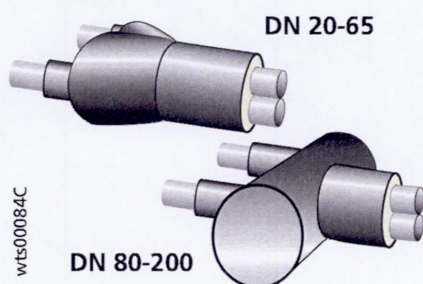
(WTS S2-EA)

(V=Vertical, H=Horizontal)



## Change-piece

(WTS S2CPY)



## Change-piece, T-model

(WTS S2CPT)



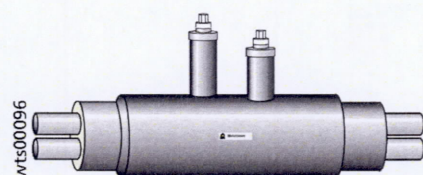
## Change-piece, F-model

(WTS S2CPF)



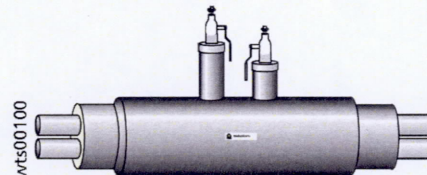
## Shut-off valve

(WTS S2-S-V)



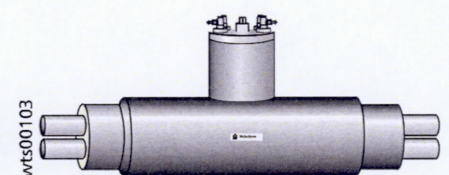
## Drain-/air release valve

(WTS S2-A-V)



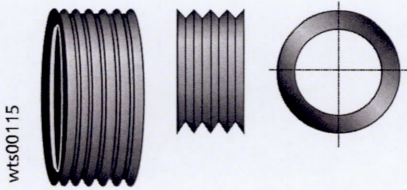
## Combination valve

(WTS S2-CV)



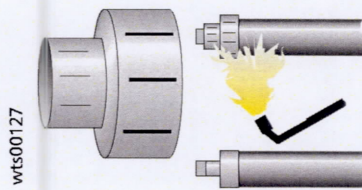
# Accessories

**Channel rubber  
(WTS CR)**



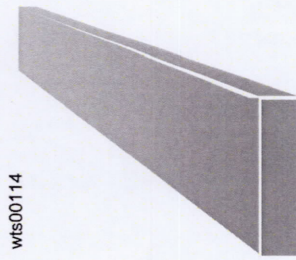
wts00115

**End seal  
(WTS DHEC)**



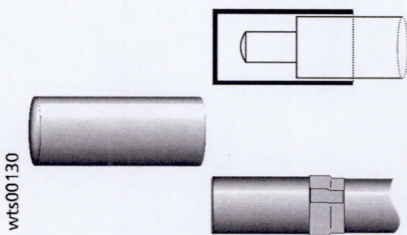
wts00127

**Foam cushion  
(WTS FPFC)**



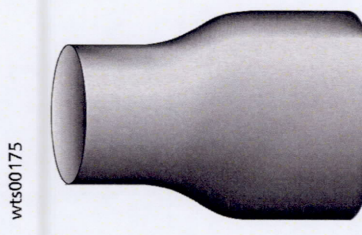
wts00114

**End cap, PE-part only  
(WTS ECK)**



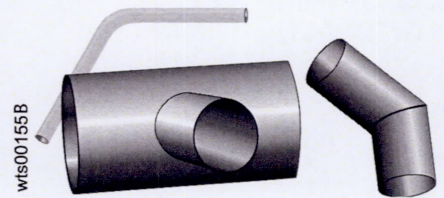
wts00130

**Reducer, PE-part only  
(WTS REDPE)**



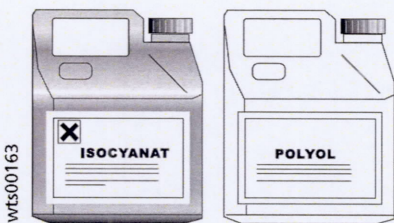
wts00175

**Tee branch kit  
(WTS T-KIT)**



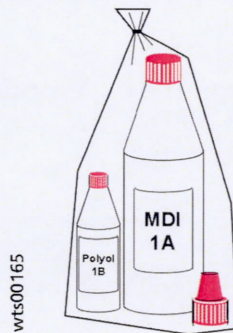
wts00155B

**PUR-components  
5, 20 ja 200L barrels.**



wts00163

**Foambottles  
(WTS FOAMBOTTLE)**



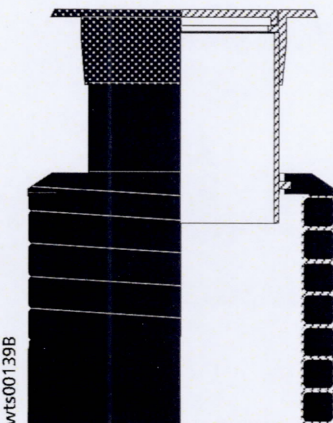
wts00165

**Marking tape  
(WTS MT)**



wts00121

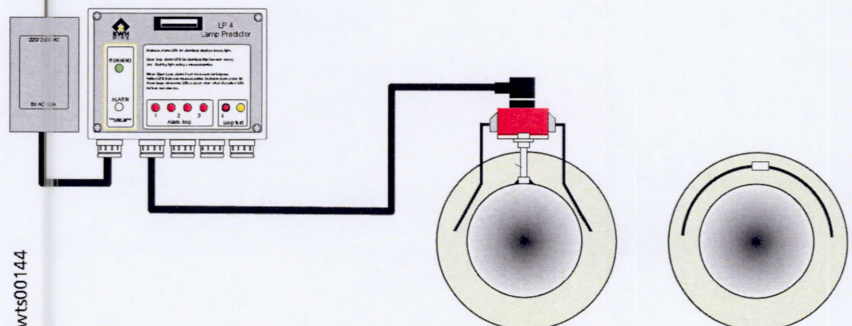
**PE-Valve well  
(WTS PEW)**



wts00139B

**Leak detection system**

220/ 240 V AC



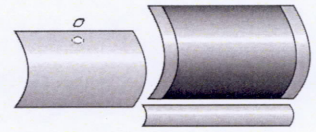
wts00144

KWH Thermopipe, all rights reserved. Updated 4/2008.

# Lengthening pieces

## JAL

Steel plate with foaming hole, plug and wide shrink sleeve



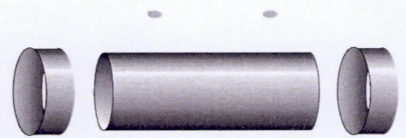
## JHK

PE-socket, narrow shrinks, foaming hole closure

wts00123

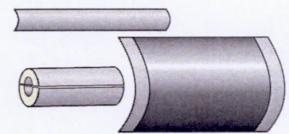


wts00122



## JMPE

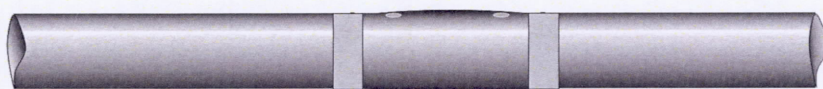
Insulation half shell and wide shrink  
DN20..100.



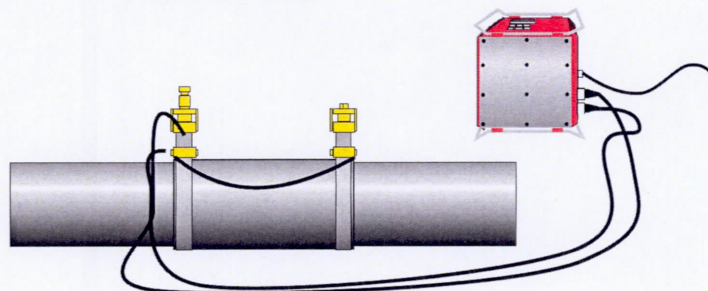
## DSJ (double sealing joint)

Shrinkable PE-socket and narrow shrinks

wts00150

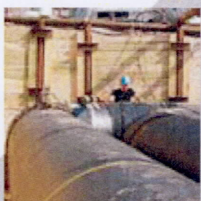
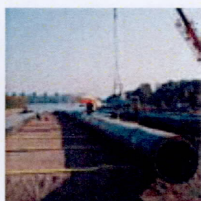


## TSC Electric welding



# **KWH Thermopipe**

*Saving your energy*



**KWH Pipe Ltd, Thermopipe**  
P.O. Box 383  
65101 Vaasa, Finland

Phone +358 6 326 5511  
Telefax +358 6 326 5260  
[www.kwhpipe.com](http://www.kwhpipe.com)

